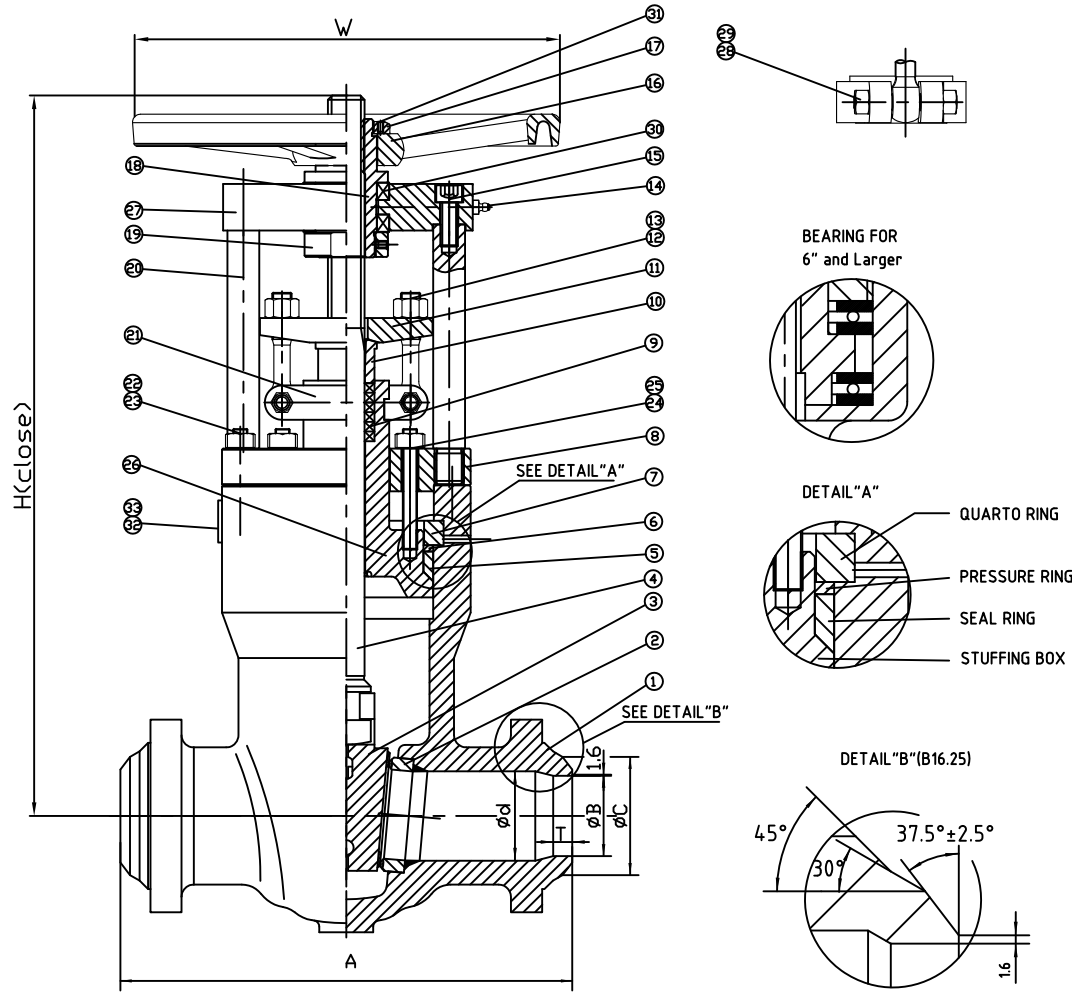


Wm. E. Williams No. 60W3 PS Class 600 BW Pressure Seal Gate Valve ASTM A216 WCB (API Trim 5)

NOTE:

- BILL OF MATERIAL AND DESIGN MAY DIFFER DEPENDING ON VALVE SIZE.
- PIPE SCHEDULE #160 SHOWN. SPECIFY PIPE SCHEDULE WHEN ORDERING.



ITEM	NAME	MATERIAL	SPECIFICATION	NOTE
1	BODY	CAST STEEL	ASTM A216-WCB	
2	BODY RING	CARBON STEEL	ASTM A105+STL	
3	GATE	CAST STEEL	ASTM A216-WCB+STL	
4	STEM	STAINLESS STEEL	ASTM A182-F6a	
5	SEAL RING		304+GRAPHITE	
6	PRESSURE RING	STAINLESS STEEL	ASTM A276-410	
7	QUARTO RING	CAST STEEL	ASTM A1045	
8	SUPPORT PLATE	CAST STEEL	ASTM A1045	
9	PACKING RING	GRAPHITE		
10	GLAND	STAINLESS STEEL	ASTM A276-410	
11	GLAND FLANGE	CAST STEEL	ASTM A216-WCB	
12	EYE BOLT	STEEL	ASTM A193-B7	
13	EYE BOLT NUT	STEEL	ASTM A194-2H	
14	OILFILLER	STEEL	ASTM A570 Gr.A	
15	HEX BOLTS	STEEL	ASTM A193-B7	
16	HANDWHEEL	NODULAR CAST IRON		
17	HANDWHEEL NUT	CARBON STEEL	ASTM A29-1035	
18	STEM NUT	NODULAR CAST IRON	ASTM A439 D-2	
19	NUT	CAST STEEL	ASTM A1045	
20	PILLAR	CAST STEEL	ASTM A1045	
21	SPLIT CLAMP RING	CAST STEEL	ASTM A216-WCB	
22	BONNET BOLT	STEEL	ASTM A193-B7	
23	NUT	STEEL	ASTM A194-2H	
24	BOLT	STEEL	ASTM A193-B7	
25	NUT	STEEL	ASTM A194-2H	
26	STUFFING BOX	CARBON STEEL	ASTM A105	
27	YOKE PLATE	CAST STEEL	ASTM A1045	
28	STUD	STEEL	ASTM A193-B7	
29	NUT	STEEL	ASTM A194-2H	
30	BEARING	STEEL		
31	SCREW	STEEL		
32	RIVET	STAINLESS STEEL	304SS	
33	NAME PLATE	STAINLESS STEEL	304SS	

SIZE	SCH	d	A	B	C	T	W	H
2"	160	51	178	42.8	60.3	13.5	200	424
2 1/2"	160	64	216	54	75	15.0	250	471
3"	160	76	254	66.5	91	17.0	250	508
4"	160	102	305	87	117	20.3	300	590
6"	160	152	457	132	172	28.0	450	828
8"	160	200	584	173	223	35.0	500	935

						MARKING SYSTEM	MSS-SP-25	INSPECTION & TEST: API 598	MATERIAL: ASTM A216 GR.WCB	UNITS: Inch, mm		
						BUTTWELD ENDS	ANSI B16.25	SHELL HYDRO	2250PSI	CLASS: 600	DATE: 10/06/15	SCALE: N.T.S.
						FACE TO FACE	ANSI B16.10	SEAT AIR	80PSI	SIZE: 2" - 8"	FIG. No.: 60W-3 PS	
						WALL THICKNESS	API 600	BACK SEAT HYDRO	1630PSI	DRAWN BY: F.J.		
NO.	DATE	DESCRIPTION	PRP'D	REV'D	APP'D	DESIGNED	API 600, ANSI B16.34		CHK'D & APR'D BY: R.P.	REV: 1	DWG No.:60GA120186-160-28	

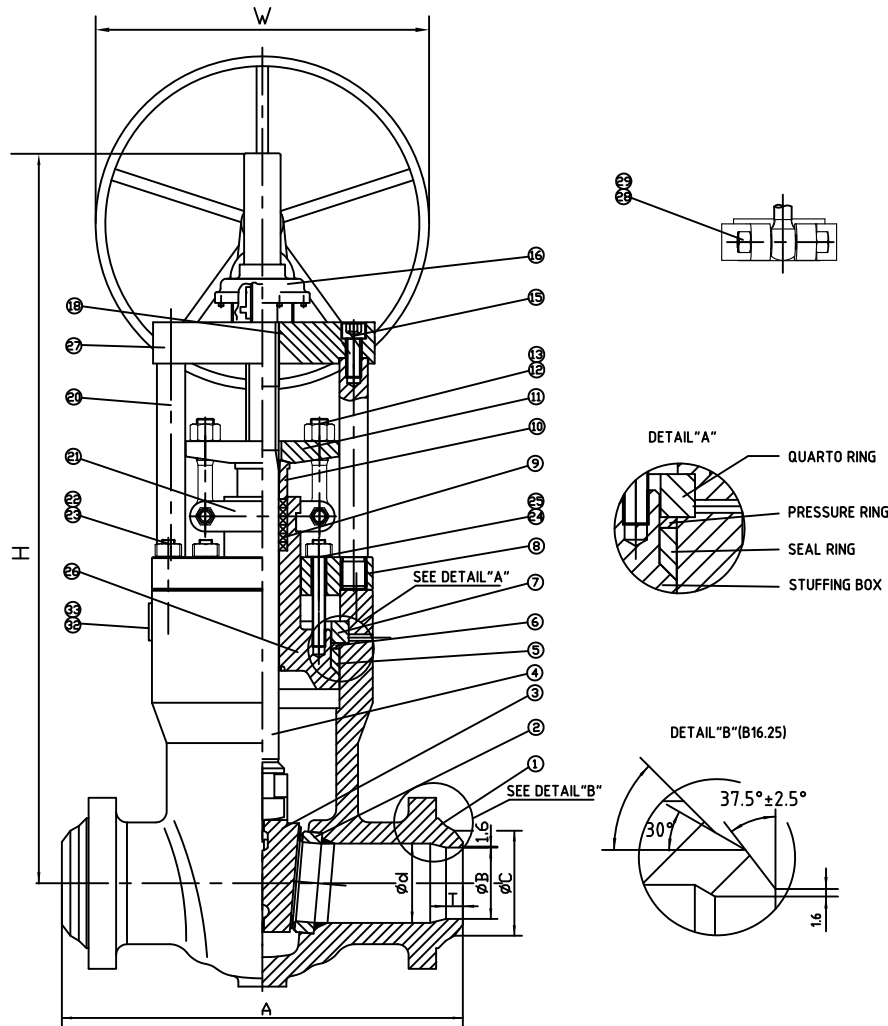
WILLIAM E. WILLIAMS VALVE CORPORATION
 38-52 REVIEW AVENUE LONG ISLAND CITY, NY 11101
 TEL: 718-392-1660 FAX: 718-229-5106

TITLE: CAST STEEL PRESSURE SEAL GATE VALVE
 CLASS 600 - API TRIM 5 - BUTTWELD - PIPE SCHEDULE 160

Wm. E. Williams No. 60W3 PS GO Class 600 BW Pressure Seal Gate Valve ASTM A216 WCB (API Trim 5)

NOTE:

- BILL OF MATERIAL AND DESIGN MAY DIFFER DEPENDING ON VALVE SIZE.
- PIPE SCHEDULE #160 SHOWN. SPECIFY PIPE SCHEDULE WHEN ORDERING.



ITEM	NAME	MATERIAL	SPECIFICATION	NOTE
1	BODY	CAST STEEL	ASTM A216-WCB	
2	BODY RING	CARBON STEEL	ASTM A105-STL	
3	GATE	CAST STEEL	ASTM A216-WCB+STL	
4	STEM	STAINLESS STEEL	ASTM A182-F6a	
5	SEAL RING		304+GRAPHITE	
6	PRESSURE RING	STAINLESS STEEL	ASTM A276-410	
7	QUARTO RING	CAST STEEL	ASTM A1045	
8	SUPPORT PLATE	CAST STEEL	ASTM A1045	
9	PACKING RING	GRAPHITE		
10	GLAND	STAINLESS STEEL	ASTM A276-410	
11	GLAND FLANGE	CAST STEEL	ASTM A216-WCB	
12	EYE BOLT	STEEL	ASTM A193-B7	
13	EYE BOLT NUT	STEEL	ASTM A194-2H	
15	HEX BOLTS	STEEL	ASTM A193-B7	
16	GEARBOX			
18	STEM NUT	NODULAR CAST IRON	ASTM A439 D-2	
20	PILLAR	CAST STEEL	ASTM A1045	
21	SPLIT CLAMP RING	CAST STEEL	ASTM A216-WCB	
22	BONNET BOLT	STEEL	ASTM A193-B7	
23	NUT	STEEL	ASTM A194-2H	
24	BOLT	STEEL	ASTM A193-B7	
25	NUT	STEEL	ASTM A194-2H	
26	STUFFING BOX	CARBON STEEL	ASTM A105	
27	YOKE PLATE	CAST STEEL	ASTM A1045	
28	STUD	STEEL	ASTM A193-B7	
29	NUT	STEEL	ASTM A194-2H	
32	RIVET	STAINLESS STEEL	304SS	
33	NAME PLATE	STAINLESS STEEL	304SS	

SIZE	SCH	d	A	B	C	T	W	H
6"	160	152	457	132	172	28.0	305	991
8"	160	200	584	173	223	35.0	305	1187
10"	160	248	711	216	278	43.0	450	1382
12"	160	298	813	257	329	50.0	450	1580

WILLIAM E. WILLIAMS VALVE CORPORATION
 38-52 REVIEW AVENUE LONG ISLAND CITY, NY 11101
 TEL: 718-992-1660 FAX: 718-929-5106

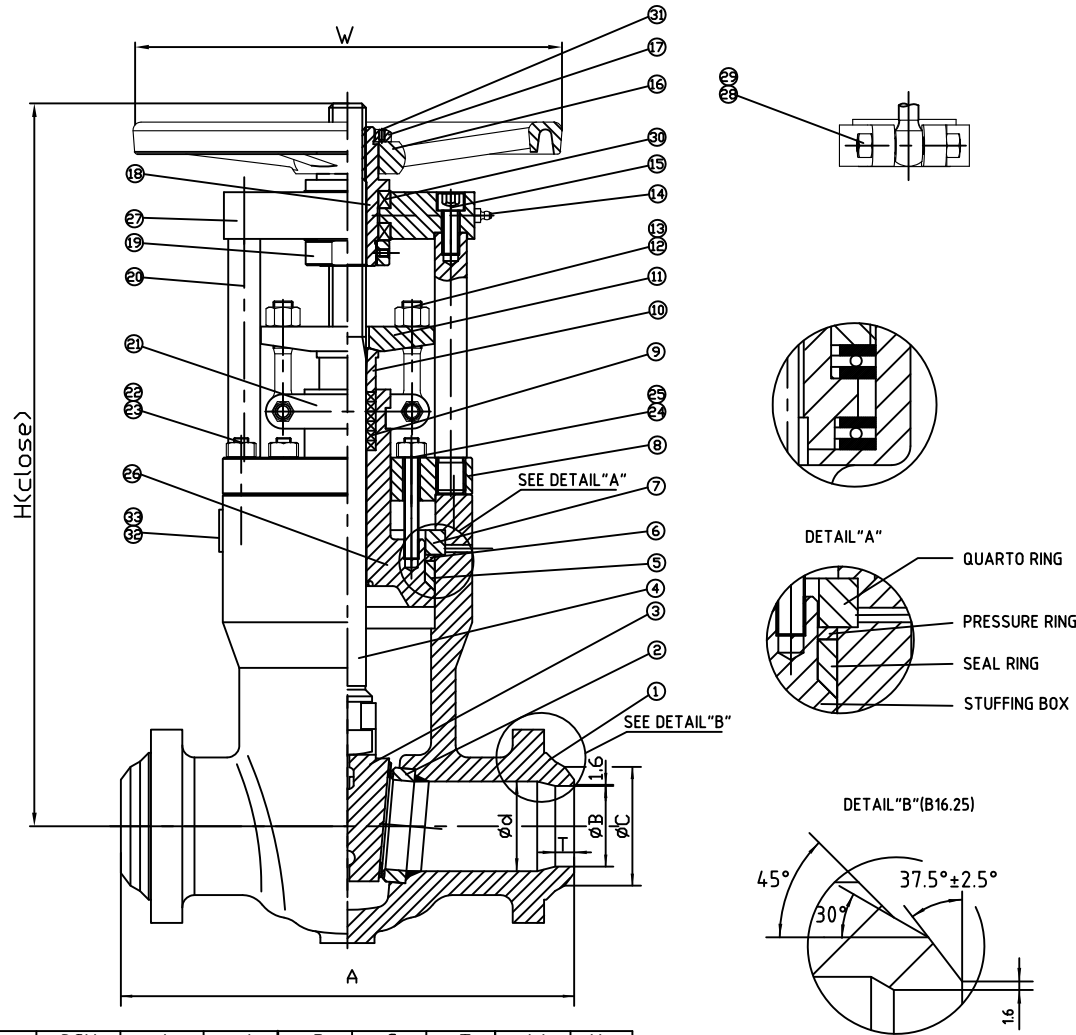
TITLE: CAST STEEL PRESSURE SEAL GATE VALVE
 CLASS 600 - API TRIM 5 - BUTTWELDED - GEAR OPERATED - SCH.160

MARKING SYSTEM	MSS-SP-25	INSPECTION & TEST:	API 598	MATERIAL:	ASTM A216 GR.WCB	UNITS:	Inch, mm
BUTTWELDED ENDS	ANSI B16.25	SHELL	HYDRO 2250PSI	CLASS:	600	DATE:	10/06/15
FACE TO FACE	ANSI B16.10	SEAT	AIR 80PSI	SIZE:	6" - 12"	SCALE:	N.T.S.
WALL THICKNESS	API 600	BACK SEAT	HYDRO 1630PSI	DRAWN BY:	F.J.	FIG. No.:	60W-3 PS GO
NO.	DATE	DESCRIPTION	PRP'D	REV'D	APP'D	DESIGNED	API 600, ANSI B16.34
CHK'D & APR'D BY:	R.P.	REV:	1	DWG No.:	60GA120221-160-28		

Wm. E. Williams No. 90W3 PS Class 900 BW Pressure Gate Valve ASTM A216 WCB (API Trim 5)

NOTE:

1. BILL OF MATERIAL AND DESIGN MAY DIFFER DEPENDING ON VALVE SIZE.
2. PIPE SCHEDULE #160 SHOWN. SPECIFY PIPE SCHEDULE WHEN ORDERING.



ITEM	NAME	MATERIAL	SPECIFICATION	NOTE
1	BODY	CAST STEEL	ASTM A216-WCB	
2	BODY RING	CARBON STEEL	ASTM A105+STL	
3	GATE	CAST STEEL	ASTM A216-WCB+STL	
4	STEM	STAINLESS STEEL	ASTM A182-F6a	
5	SEAL RING		304+GRAPHITE	
6	PRESSURE RING	STAINLESS STEEL	ASTM A276-410	
7	QUARTO RING	CAST STEEL	ASTM A1045	
8	SUPPORT PLATE	CAST STEEL	ASTM A1045	
9	PACKING RING	GRAPHITE		
10	GLAND	STAINLESS STEEL	ASTM A276-410	
11	GLAND FLANGE	CAST STEEL	ASTM A216-WCB	
12	EYE BOLT	STEEL	ASTM A193-B7	
13	EYE BOLT NUT	STEEL	ASTM A194-2H	
14	OILFILLER	STEEL	ASTM A570 Gr.A	
15	HEX BOLTS	STEEL	ASTM A193-B7	
16	HANDWHEEL	NODULAR CAST IRON		
17	HANDWHEEL NUT	CARBON STEEL	ASTM A29-1035	
18	STEM NUT	NODULAR CAST IRON	ASTM A439 D-2	
19	NUT	CAST STEEL	ASTM A1045	
20	PILLAR	CAST STEEL	ASTM A1045	
21	SPLIT CLAMP RING	CAST STEEL	ASTM A216-WCB	
22	BONNET BOLT	STEEL	ASTM A193-B7	
23	NUT	STEEL	ASTM A194-2H	
24	BOLT	STEEL	ASTM A193-B7	
25	NUT	STEEL	ASTM A194-2H	
26	STUFFING BOX	CARBON STEEL	ASTM A105	
27	YOKE PLATE	CAST STEEL	ASTM A1045	
28	STUD	STEEL	ASTM A193-B7	
29	NUT	STEEL	ASTM A194-2H	
30	BEARING	STEEL		
31	SCREW	STEEL		
32	RIVET	STAINLESS STEEL	304SS	
33	NAME PLATE	STAINLESS STEEL	304SS	

SIZE	SCH	d	A	B	C	T	W	H
2"	160	48	216	42.8	60.3	13.5	250	458
2 1/2"	160	57	254	54	75	15.0	300	520
3"	160	73	305	66.5	91	17.0	300	548
4"	160	98	356	87	117	20.3	350	611

NO.	DATE	DESCRIPTION	PRP'D	REV'D	APP'D	DESIGNED	MARKING SYSTEM	MSS-SP-25	INSPECTION & TEST: API 598	MATERIAL: ASTM A216 GR.WCB	UNITS: Inch, mm
							BUTTWELD ENDS	ANSI B16.25	SHELL	HYDRO	3350PSI
							FACE TO FACE	ANSI B16.10	SEAT	AIR	80PSI
							WALL THICKNESS	API 600	BACK SEAT	HYDRO	2450PSI
	10/6/15	RELEASED	F.J.	R.P.	R.P.						DATE: 10/06/15
											SCALE: N.T.S.
											FIG. No.: 90W-3 PS
											DWG No.: 60GA120177-160-28

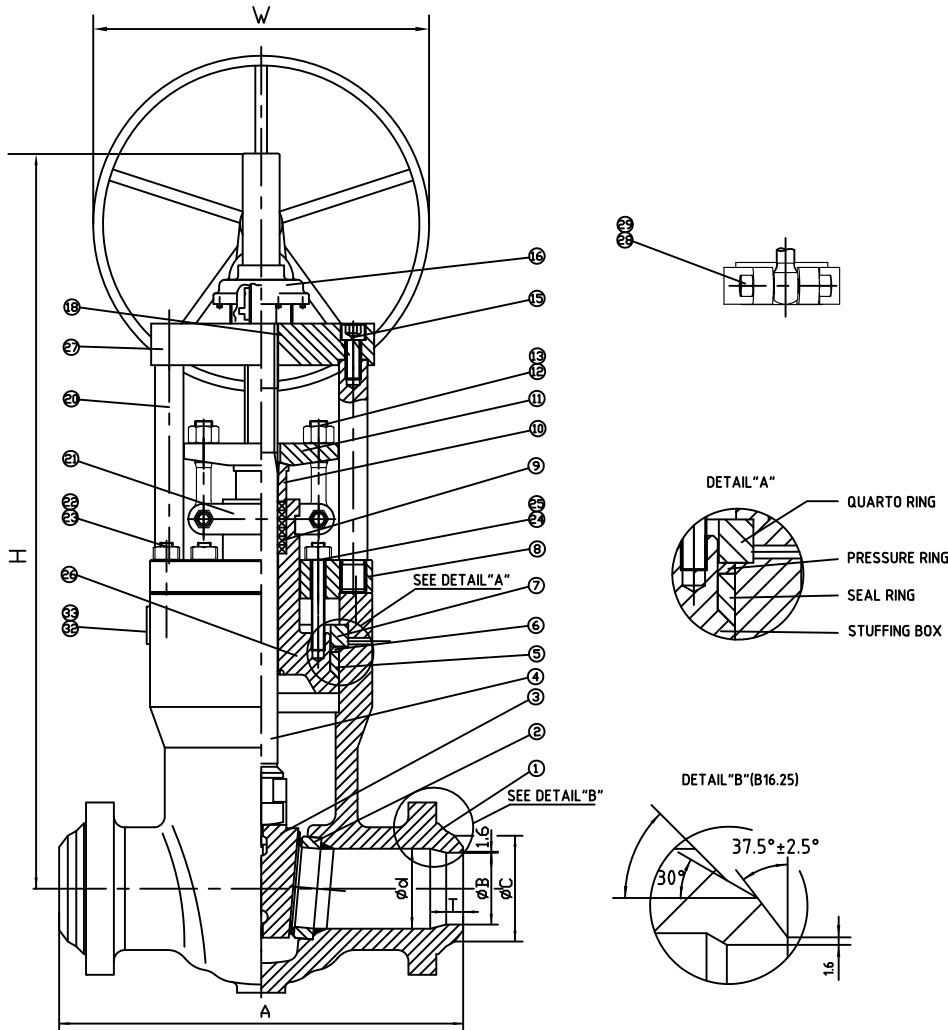
WILLIAM E. WILLIAMS VALVE CORPORATION
 38-52 REVIEW AVENUE LONG ISLAND CITY, NY 11101
 TEL: 718-392-1660 FAX: 718-729-5106

TITLE: CAST STEEL PRESSURE GATE VALVE CLASS 900 - API TRIM 5 - BUTTWELD

Wm. E. Williams No. 90W3 PS GO Class 900 BW Pressure Gate Valve ASTM A216 WCB (API Trim 5)

NOTE:

- BILL OF MATERIAL AND DESIGN MAY DIFFER DEPENDING ON VALVE SIZE.
- PIPE SCHEDULE #160 SHOWN. SPECIFY PIPE SCHEDULE WHEN ORDERING.



ITEM	NAME	MATERIAL	SPECIFICATION	NOTE
1	BODY	CAST STEEL	ASTM A216-WCB	
2	BODY RING	CARBON STEEL	ASTM A105+STL	
3	GATE	CAST STEEL	ASTM A216-WCB+STL	
4	STEM	STAINLESS STEEL	ASTM A182-F6a	
5	SEAL RING		304+GRAPHITE	
6	PRESSURE RING	STAINLESS STEEL	ASTM A276-410	
7	QUARTO RING	CAST STEEL	ASTM A1045	
8	SUPPORT PLATE	CAST STEEL	ASTM A1045	
9	PACKING RING	GRAPHITE		
10	GLAND	STAINLESS STEEL	ASTM A276-410	
11	GLAND FLANGE	CAST STEEL	ASTM A216-WCB	
12	EYE BOLT	STEEL	ASTM A193-B7	
13	EYE BOLT NUT	STEEL	ASTM A194-2H	
15	HEX BOLTS	STEEL	ASTM A193-B7	
16	GEARBOX			
18	STEM NUT	NODULAR CAST IRON	ASTM A439 D-2	
20	PILLAR	CAST STEEL	ASTM A1045	
21	SPLIT CLAMP RING	CAST STEEL	ASTM A216-WCB	
22	BONNET BOLT	STEEL	ASTM A193-B7	
23	NUT	STEEL	ASTM A194-2H	
24	BOLT	STEEL	ASTM A193-B7	
25	NUT	STEEL	ASTM A194-2H	
26	STUFFING BOX	CARBON STEEL	ASTM A105	
27	YOKE PLATE	CAST STEEL	ASTM A1045	
28	STUD	STEEL	ASTM A193-B7	
29	NUT	STEEL	ASTM A194-2H	
32	RIVET	STAINLESS STEEL	304SS	
33	NAME PLATE	STAINLESS STEEL	304SS	

SIZE	SCH	d	A	B	C	T	W	H
6"	160	146	508	132	172	28.0	305	1150
8"	160	191	660	173	223	35.0	450	1321
10"	160	238	787	216	278	43.0	610	1529
12"	160	282	914	257	329	50.0	610	1722

WILLIAM E. WILLIAMS VALVE CORPORATION
 38-52 REVIEW AVENUE LONG ISLAND CITY, NY 11101
 TEL: 718-392-1660 FAX: 718-729-5106

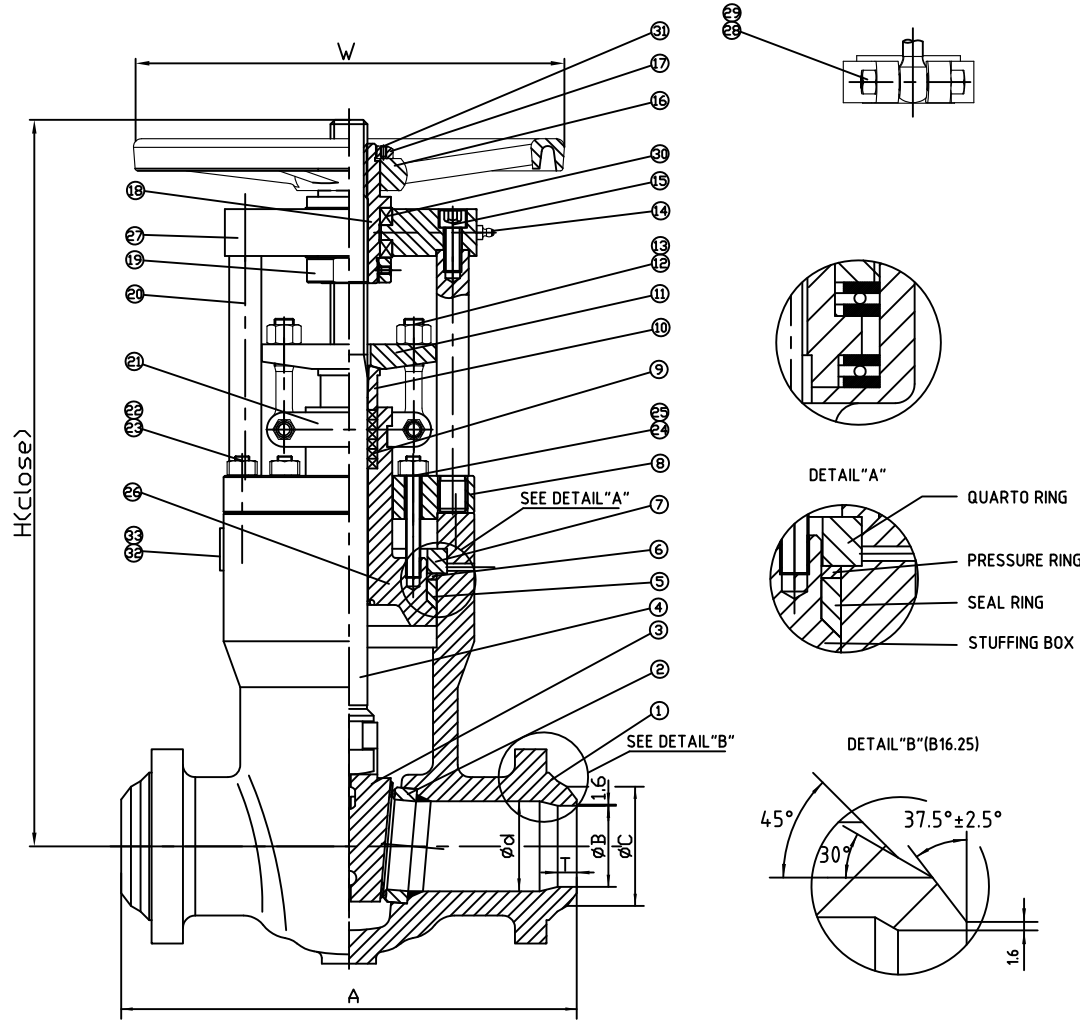
TITLE: CAST STEEL PRESSURE GATE VALVE
 CLASS 900 - API TRIM 5 - BUTTWELD - GEAR OPERATOR - SCH.160

						MARKING SYSTEM	MSS-SP-25	INSPECTION & TEST: API 598			MATERIAL: ASTM A216 GR.WCB	UNITS: Inch, mm	
						BUTTWELD ENDS	ANSI B16.25	SHELL	HYDRO	3350PSI	CLASS: 900	DATE: 10/06/15	SCALE: N.T.S.
						FACE TO FACE	ANSI B16.10	SEAT	AIR	80PSI	SIZE: 6" - 12"	FIG. No.: 90W-3 PS GO	
						WALL THICKNESS	API 600	BACK SEAT	HYDRO	2450PSI	DRAWN BY: F.J.		
NO.	DATE	DESCRIPTION	PRP'D	REV'D	APP'D	DESIGNED	API 600, ANSI B16.34			CHK'D & APR'D BY: R.P.	REV: 1	DWG No.: 60GA120155-160-28	

Wm. E. Williams No. 150W3 PS Class 1500 BW Pressure Seal Gate Valve ASTM A216 WCB (API Trim 5)

NOTE:

- BILL OF MATERIAL AND DESIGN MAY DIFFER DEPENDING ON VALVE SIZE.
- PIPE SCHEDULE #160 SHOWN. SPECIFY PIPE SCHEDULE WHEN ORDERING.



ITEM	NAME	MATERIAL	SPECIFICATION	NOTE
1	BODY	CAST STEEL	ASTM A216-WCB	
2	BODY RING	CARBON STEEL	ASTM A105+STL	
3	GATE	CAST STEEL	ASTM A216-WCB+STL	
4	STEM	STAINLESS STEEL	ASTM A182-F6a	
5	SEAL RING		304+GRAPHITE	
6	PRESSURE RING	STAINLESS STEEL	ASTM A276-4.10	
7	QUARTO RING	CAST STEEL	ASTM A1045	
8	SUPPORT PLATE	CAST STEEL	ASTM A1045	
9	PACKING RING	GRAPHITE		
10	GLAND	STAINLESS STEEL	ASTM A276-4.10	
11	GLAND FLANGE	CAST STEEL	ASTM A216-WCB	
12	EYE BOLT	STEEL	ASTM A193-B7	
13	EYE BOLT NUT	STEEL	ASTM A194-2H	
14	OILFILLER	STEEL	ASTM A570 Gr.A	
15	HEX BOLTS	STEEL	ASTM A193-B7	
16	HANDWHEEL	NODULAR CAST IRON		
17	HANDWHEEL NUT	CARBON STEEL	ASTM A29-1035	
18	STEM NUT	NODULAR CAST IRON	ASTM A439 D-2	
19	NUT	CAST STEEL	ASTM A1045	
20	PILLAR	CAST STEEL	ASTM A1045	
21	SPLIT CLAMP RING	CAST STEEL	ASTM A216-WCB	
22	BONNET BOLT	STEEL	ASTM A193-B7	
23	NUT	STEEL	ASTM A194-2H	
24	BOLT	STEEL	ASTM A193-B7	
25	NUT	STEEL	ASTM A194-2H	
26	STUFFING BOX	CARBON STEEL	ASTM A105	
27	YOKE PLATE	CAST STEEL	ASTM A1045	
28	STUD	STEEL	ASTM A193-B7	
29	NUT	STEEL	ASTM A194-2H	
30	BEARING	STEEL		
31	SCREW	STEEL		
32	RIVET	STAINLESS STEEL	304SS	
33	NAME PLATE	STAINLESS STEEL	304SS	

SIZE	SCH	d	A	B	C	T	W	H
2"	160	4.8	216	42.8	60.3	13.5	250	455
2 1/2"	160	57	254	54	75	15.0	300	520
3"	160	70	305	66.5	91	17.0	350	580
4"	160	92	406	87	117	20.3	500	665

WILLIAM E. WILLIAMS VALVE CORPORATION
 38-52 REVIEW AVENUE LONG ISLAND CITY, NY 11101
 TEL: 718-392-1660 FAX: 718-729-5106

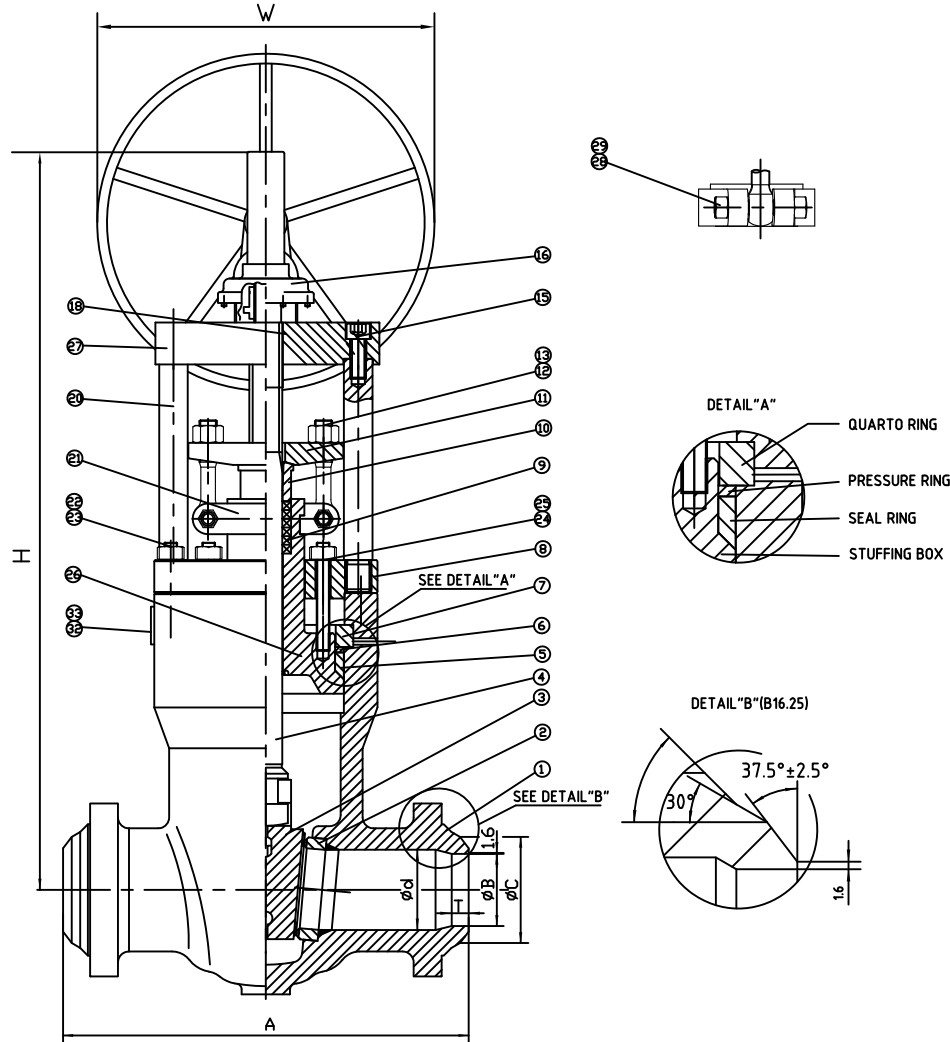
TITLE: CAST STEEL PRESSURE GATE VALVE CLASS 1500 - API TRIM 5 - BUTTWELD

MARKING SYSTEM	MSS-SP-25	INSPECTION & TEST:	API 598	MATERIAL:	ASTM A216 GR.WCB	UNITS:	Inch, mm						
BUTTWELD ENDS	ANSI B16.25	SHELL	HYDRO	5598PSI	CLASS:	1500	DATE:	10/06/15	SCALE:	N.T.S.			
FACE TO FACE	ANSI B16.10	SEAT	AIR	80PSI	SIZE:	2" - 4"	FIG. No.:	150W-3 PS					
WALL THICKNESS	API 600	BACK SEAT	HYDRO	4100PSI	DRAWN BY:	F.J.							
NO.	DATE	DESCRIPTION	PRP'D	REV'D	APP'D	DESIGNED	API 600, ANSI B16.34	CHK'D & APR'D BY:	R.P.	REV:	1	DWG No.:	60GA120153-160-28

Wm. E. Williams No. 150W3PS GO Class 1500 BW Pressure Seal Gate Valve ASTM A216 WCB (API Trim 5)

NOTE:

- BILL OF MATERIAL AND DESIGN MAY DIFFER DEPENDING ON VALVE SIZE.
- PIPE SCHEDULE #160 SHOWN. SPECIFY PIPE SCHEDULE WHEN ORDERING.



ITEM	NAME	MATERIAL	SPECIFICATION	NOTE
1	BODY	CAST STEEL	ASTM A216-WCB	
2	BODY RING	CARBON STEEL	ASTM A105+STL	
3	GATE	CAST STEEL	ASTM A216-WCB+STL	
4	STEM	STAINLESS STEEL	ASTM A182-F6a	
5	SEAL RING		304+GRAPHITE	
6	PRESSURE RING	STAINLESS STEEL	ASTM A276-410	
7	QUARTO RING	CAST STEEL	ASTM A1045	
8	SUPPORT PLATE	CAST STEEL	ASTM A1045	
9	PACKING RING	GRAPHITE		
10	GLAND	STAINLESS STEEL	ASTM A276-410	
11	GLAND FLANGE	CAST STEEL	ASTM A216-WCB	
12	EYE BOLT	STEEL	ASTM A193-B7	
13	EYE BOLT NUT	STEEL	ASTM A194-2H	
15	HEX BOLTS	STEEL	ASTM A193-B7	
16	GEARBOX			
18	STEM NUT	NODULAR CAST IRON	ASTM A439 D-2	
20	PILLAR	CAST STEEL	ASTM A1045	
21	SPLIT CLAMP RING	CAST STEEL	ASTM A216-WCB	
22	BONNET BOLT	STEEL	ASTM A193-B7	
23	NUT	STEEL	ASTM A194-2H	
24	BOLT	STEEL	ASTM A193-B7	
25	NUT	STEEL	ASTM A194-2H	
26	STUFFING BOX	CARBON STEEL	ASTM A105	
27	YOKE PLATE	CAST STEEL	ASTM A1045	
28	STUD	STEEL	ASTM A193-B7	
29	NUT	STEEL	ASTM A194-2H	
32	RIVET	STAINLESS STEEL	304SS	
33	NAME PLATE	STAINLESS STEEL	304SS	

SIZE	SCH	d	A	B	C	T	W	H
6"	160	136	559	132	172	28.0	450	1306
8"	160	178	711	173	223	35.0	610	1344
10"	160	222	864	216	278	43.0	610	1525
12"	160	263	991	257	329	50.0	610	1855

WILLIAM E. WILLIAMS VALVE CORPORATION
 38-52 REVIEW AVENUE LONG ISLAND CITY, NY 11101
 TEL: 718-392-1660 FAX: 718-729-5106

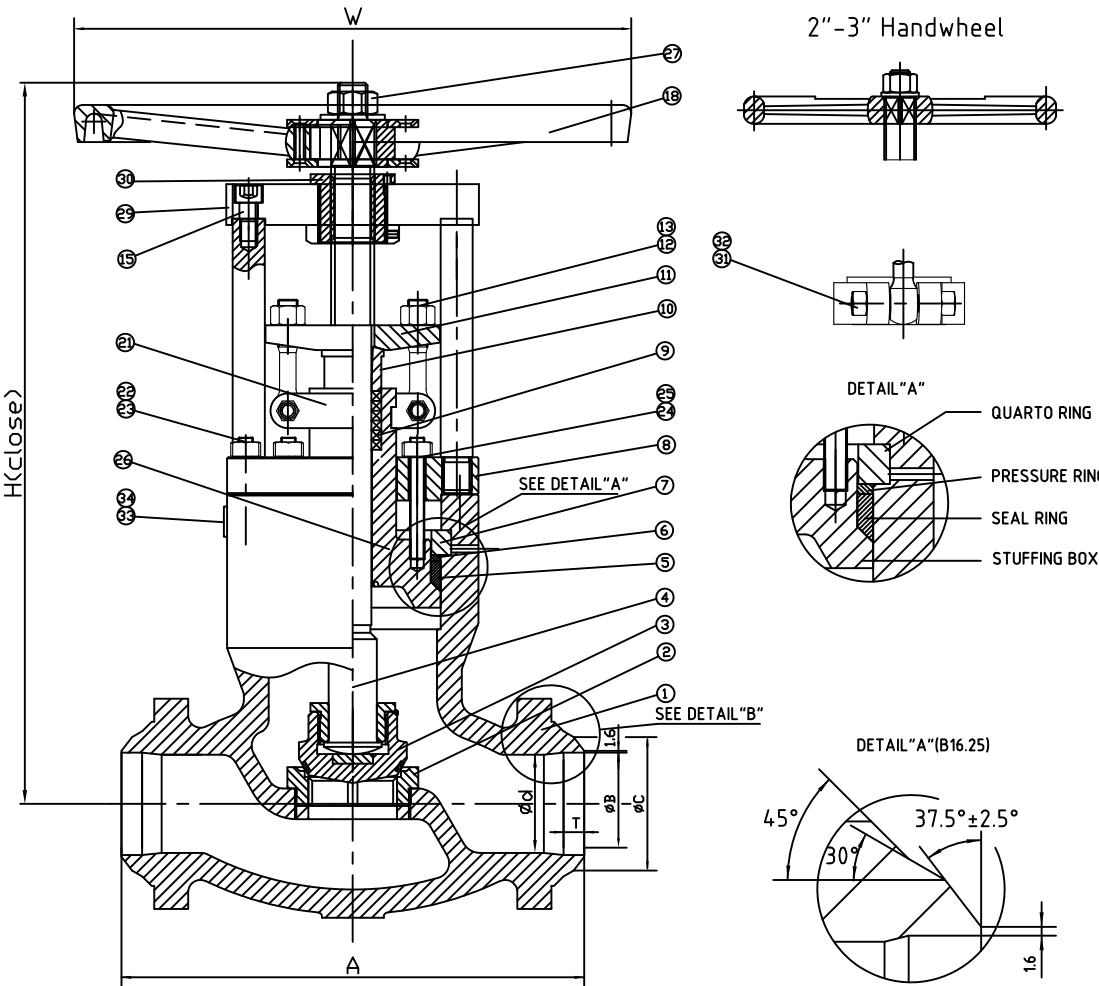
TITLE: CAST STEEL PRESSURE SEAL GATE VALVE
 CLASS 1500 - API TRIM 5 - BUTTWELD - GEAR OPERATED - SCH.160

						MARKING SYSTEM	MSS-SP-25	INSPECTION & TEST: API 598	MATERIAL: ASTM A216 GR.WCB	UNITS: Inch, mm	
						BUTTWELD ENDS	ANSI B16.25	SHELL HYDRO 5598PSI	CLASS: 1500	DATE: 10/06/15	SCALE: N.T.S.
						FACE TO FACE	ANSI B16.10	SEAT AIR 80PSI	SIZE: 6" - 12"		FIG. No.: 150W-3 PS GO
						WALL THICKNESS	API 600	BACK SEAT HYDRO 4100PSI	DRAWN BY: F.J.		
NO.	DATE	DESCRIPTION	PRP'D	REV'D	APP'D	DESIGNED	API 600, ANSI B16.34		CHK'D & APR'D BY: R.P.	REV: 1	DWG No.: 60GA120154-160-28

Wm. E. Williams No. 602W3 PS Class 600 BW Pressure Seal Globe Valve ASTM A216 WCB (API Trim 5)

NOTE:

- BILL OF MATERIAL AND DESIGN MAY DIFFER DEPENDING ON VALVE SIZE.
- SCHEDULE #160 SHOWN. SPECIFY PIPE SCHEDULE WHEN ORDERING.



ITEM	NAME	MATERIAL	SPECIFICATION	NOTE
1	BODY	CAST STEEL	ASTM A216-WCB	
2	BODY RING	CARBON STEEL	ASTM A105+STL	
3	DISC	CARBON STEEL	ASTM A105+STL	
4	STEM	STAINLESS STEEL	ASTM A182-F6a	
5	SEAL RING		304+GRAPHITE	
6	PRESSURE RING	STAINLESS STEEL	ASTM A276-410	
7	QUARTO RING	CAST STEEL	ASTM A1045	
8	SUPPORT PLATE	CAST STEEL	ASTM A1045	
9	PACKING RING	GRAPHITE		
10	GLAND	STAINLESS STEEL	ASTM A276-410	
11	GLAND FLANGE	CAST STEEL	ASTM A216-WCB	
12	EYE BOLT	STEEL	ASTM A193-B7	
13	EYE BOLT NUT	STEEL	ASTM A194-2H	
15	HEX BOLTS	STEEL	ASTM A193-B7	
16	PILLAR	CAST STEEL	ASTM A1045	
18	HANDWHEEL	NODULAR CAST IRON		
20	NUT	CAST STEEL	ASTM A1045	
21	SPLIT CLAMP RING	CAST STEEL	ASTM A216-WCB	
22	BONNET BOLT	STEEL	ASTM A193-B7	
23	BONNET NUT	STEEL	ASTM A194-2H	
24	BOLT	STEEL	ASTM A193-B7	
25	NUT	STEEL	ASTM A194-2H	
26	STUFFING BOX	CARBON STEEL	ASTM A105	
27	HANDWHEEL NUT	CARBON STEEL	ASTM A29-1035	
29	YOKE PLATE	CAST STEEL	ASTM A1045	
30	STEM NUT	NODULAR CAST IRON	ASTM A439 D-2	
31	NUT	STEEL	ASTM A194-2H	
32	STUD	STEEL	ASTM A194-B7	
33	RIVET	STAINLESS STEEL	304SS	
34	NAME PLATE	STAINLESS STEEL	304SS	

SIZE	SCH	d	A	W	B	C	T	H
2"	160	51	178	250	42.8	60.3	13.5	397
2 1/2"	160	64	216	300	54	75	15.0	456
3"	160	76	254	350	66.5	91	17.0	492
4"	160	102	305	450	87	117	20.3	636

						MARKING SYSTEM	MSS-SP-25	INSPECTION & TEST:	API 598	MATERIAL:	ASTM A216 GR.WCB	UNITS:	Inch, mm			
						BUTTWELD ENDS	ANSI B16.25	SHELL	HYDRO	2250PSI	CLASS:	600	DATE:	10/06/15	SCALE:	N.T.S.
						FACE TO FACE	ANSI B16.10	SEAT	AIR	80PSI	SIZE:	2" - 4"	FIG. No.: 602W-3 PS			
						WALL THICKNESS	API 600	BACK SEAT	HYDRO	1630PSI	DRAWN BY:	F.J.				
NO.	DATE	DESCRIPTION	PRP'D	REV'D	APP'D	DESIGNED	API 600, ANSI B16.34			CHK'D & APR'D BY:	R.P.	REV:	1	DWG No.: 60GL120187-160-28		

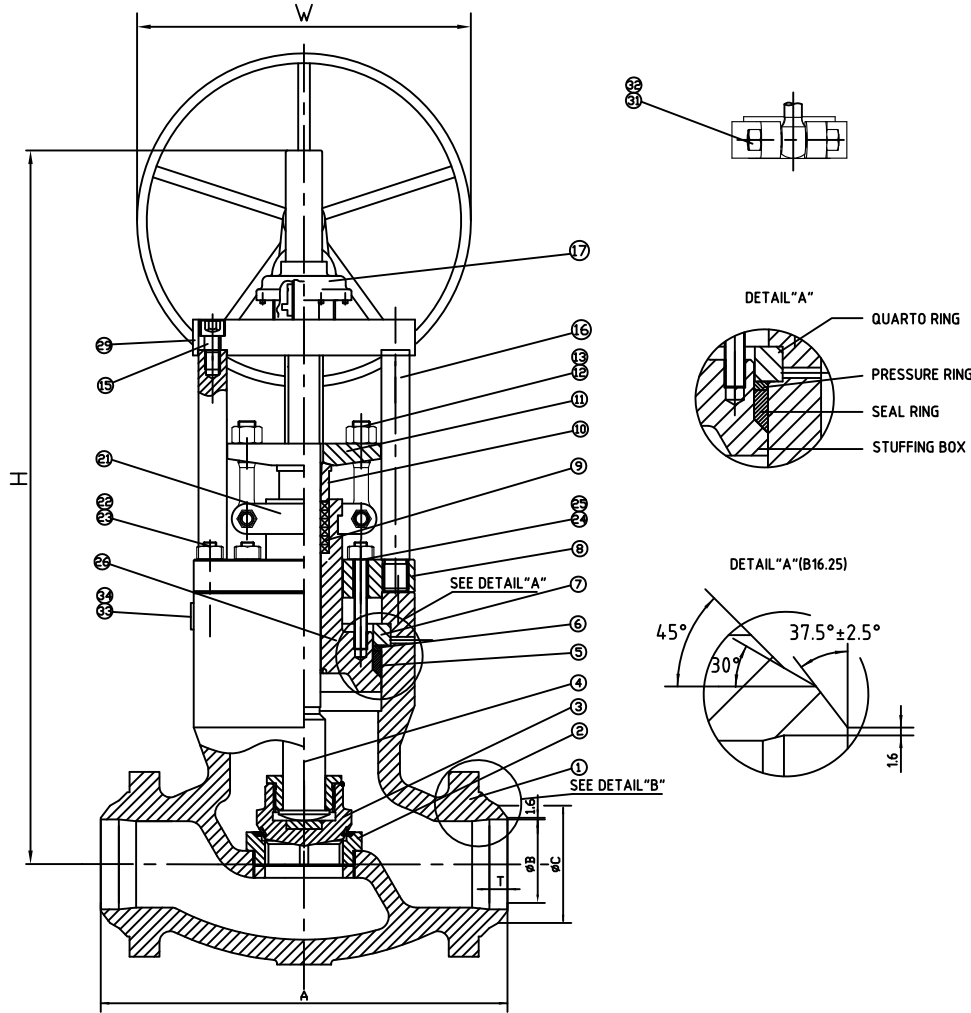
WILLIAM E. WILLIAMS VALVE CORPORATION
 38-52 REVIEW AVENUE LONG ISLAND CITY, NY 11101
 TEL: 718-392-1660 FAX: 718-729-5106

TITLE: CAST STEEL PRESSURE SEAL GLOBE VALVE CLASS 600 - API TRIM 5 - BUTTWELD - SCH.160

Wm. E. Williams No. 602W3 PS GO Class 600 BW Pressure Seal Globe Valve ASTM A216 WCB (API Trim 5)

NOTE:

- BILL OF MATERIAL AND DESIGN MAY DIFFER DEPENDING ON VALVE SIZE.
- SCHEDULE #160 SHOWN. SPECIFY PIPE SCHEDULE WHEN ORDERING.



ITEM	NAME	MATERIAL	SPECIFICATION	NOTE
1	BODY	CAST STEEL	ASTM A216-WCB	
2	BODY RING	CARBON STEEL	ASTM A105+STL	
3	DISC	CARBON STEEL	ASTM A105+STL	
4	STEM	STAINLESS STEEL	ASTM A182-F6a	
5	SEAL RING		304+GRAPHITE	
6	PRESSURE RING	STAINLESS STEEL	ASTM A276-410	
7	QUARTO RING	CAST STEEL	ASTM A1045	
8	SUPPORT PLATE	CAST STEEL	ASTM A1045	
9	PACKING RING	GRAPHITE		
10	GLAND	STAINLESS STEEL	ASTM A276-410	
11	GLAND FLANGE	CAST STEEL	ASTM A216-WCB	
12	EYE BOLT	STEEL	ASTM A193-B7	
13	EYE BOLT NUT	STEEL	ASTM A194-2H	
15	HEX BOLTS	STEEL	ASTM A193-B7	
16	PILLAR	CAST STEEL	ASTM A1045	
17	GEARBOX			
20	NUT	CAST STEEL	ASTM A1045	
21	SPLIT CLAMP RING	CAST STEEL	ASTM A216-WCB	
22	BONNET BOLT	STEEL	ASTM A193-B7	
23	BONNET NUT	STEEL	ASTM A194-2H	
24	BOLT	STEEL	ASTM A193-B7	
25	NUT	STEEL	ASTM A194-2H	
26	STUFFING BOX	CARBON STEEL	ASTM A105	
29	YOKE PLATE	CAST STEEL	ASTM A1045	
31	NUT	STEEL	ASTM A194-2H	
32	STUD	STEEL	ASTM A194-B7	
33	RIVET	STAINLESS STEEL	304SS	
34	NAME PLATE	STAINLESS STEEL	304SS	

SIZE	SCH	d	A	W	B	C	T	H
6"	160	152	457	460	132	172	28.0	990
8"	160	200	584	460	173	223	35.0	1166
10"	160	248	711	610	216	278	43.0	1421

WILLIAM E. WILLIAMS VALVE CORPORATION
 38-52 REVIEW AVENUE LONG ISLAND CITY, NY 11101
 TEL: 718-392-1660 FAX: 718-729-5106

TITLE: CAST STEEL PRESSURE SEAL GLOBE VALVE
 CLASS 600 - API TRIM 5 - BUTTWELD - GEAR OPERATED - SCH.160

						MARKING SYSTEM	MSS-SP-25	INSPECTION & TEST: API 598	MATERIAL: ASTM A216 GR.WCB	UNITS: Inch, mm	
						BUTTWELD ENDS	ANSI B16.25	SHELL HYDRO	2250PSI	CLASS: 600 DATE: 10/06/15	SCALE: N.T.S.
						FACE TO FACE	ANSI B16.10	SEAT AIR	80PSI	SIZE: 6" - 10"	FIG. No.: 602W-3 PS GO
						WALL THICKNESS	API 600	BACK SEAT HYDRO	1630PSI	DRAWN BY: F.J.	
NO.	DATE	DESCRIPTION	PRP'D	REV'D	APP'D	DESIGNED	API 600, ANSI B16.34			CHK'D & APR'D BY: R.P.	REV: 1 DWG No.: 60GL120225-160-28



10/6/15

RELEASED

F.J.

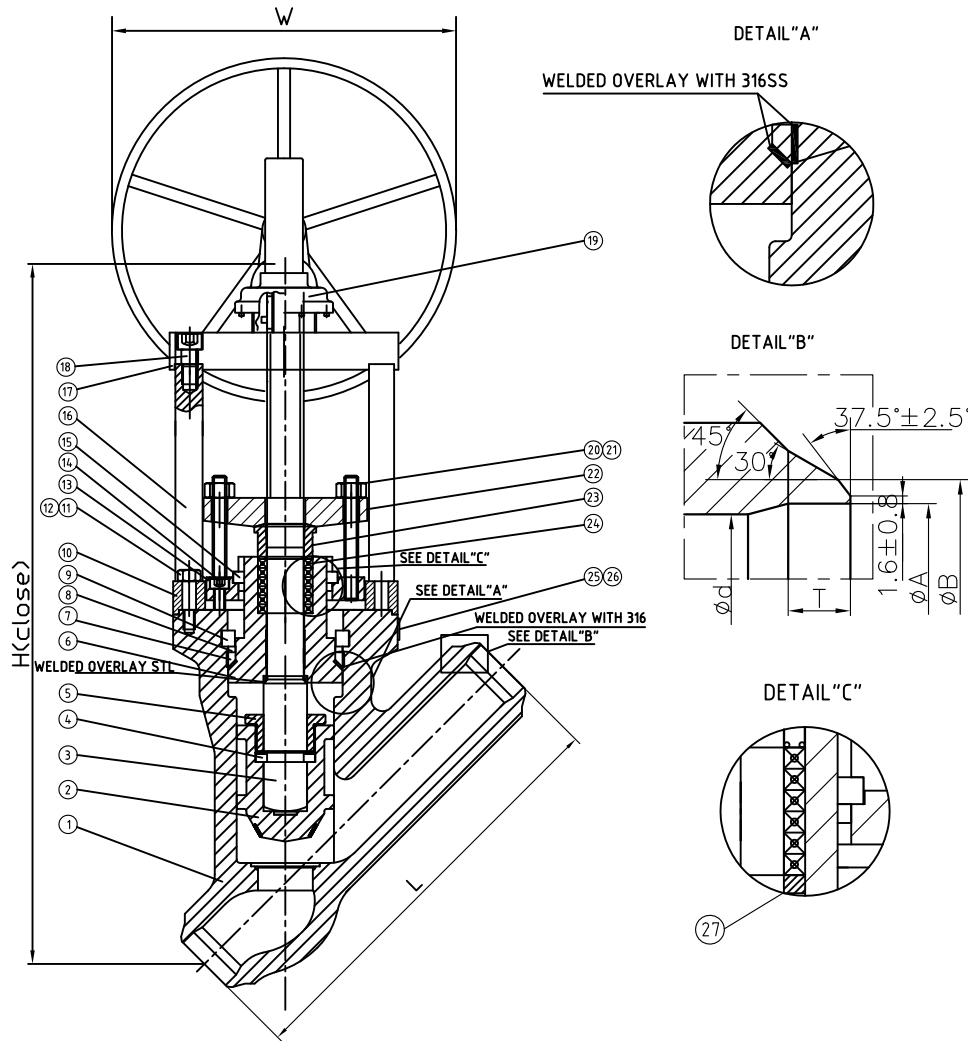
R.P.

R.P.

Wm. E. Williams No. 602YW3 PS GO Class 600 BW Pressure Seal Globe Valve ASTM A216 WCB (API Trim 5)

NOTE:

- BILL OF MATERIAL AND DESIGN MAY DIFFER DEPENDING ON VALVE SIZE.
- SCHEDULE #160 SHOWN BELOW. SPECIFY PIPE SCHEDULE WHEN ORDERING.



ITEM	NAME	MATERIAL	SPECIFICATION
1	BODY	CAST STEEL	ASTM A216 WCB+STL
2	DISC	CARBON STEEL	ASTM A105N+STL
3	STEM	STAINLESS STEEL	ASTM A182 F6a
4	SPLIT COLLAR	CARBON STEEL	AISI A1045
5	DISC NUT	STAINLESS STEEL	ASTM A276 410
6	BONNET	CARBON STEEL	ASTM A105N+STL
7	GASKET		316+GRAPHITE
8	SPACER RING	CARBON STEEL	AISI A1045
9	SEPARATE RING	CARBON STEEL	AISI A1045
10	COVER	CARBON STEEL	AISI A1020
11	STUD	STEEL	ASTM A193 B7
12	NUT	STEEL	ASTM A194 2H
13	SUPPORT RING	CARBON STEEL	AISI A1020
14	SCREW	STEEL	ASTM A193 B7
15	SPLIT COLLAR	CARBON STEEL	AISI A1045
16	STAND COLUMN	CARBON STEEL	AISI A1020
17	SUPPORTING PLATE	CARBON STEEL	ASTM A105N
18	SCREW	STEEL	ASTM A193 B7
19	GEARBOX		
20	STUD	STEEL	ASTM A193 B7
21	NUT	STEEL	ASTM A194 2H
22	GLAND FLANGE	CAST STEEL	ASTM A216 WCB
23	GLAND	STAINLESS STEEL	ASTM A276 410
24	PACKING		CHESTERTON PACKING
25	NAME PLATE	STAINLESS STEEL	ASTM A240 304
26	RIVET	STAINLESS STEEL	ASTM A240 304
27	PACKING CUSHION	STAINLESS STEEL	ASTM A276-410

SIZE	SCH	d	L	W	A	B	T	H
6"	160	136	559	610	132	172	28.0	1468
8"	160	178	660	710	173	223	35.0	1800
10"	160	222	787	710	216	278	43.0	2250

WILLIAM E. WILLIAMS VALVE CORPORATION
 38-52 REVIEW AVENUE LONG ISLAND CITY, NY 11101
 TEL: 718-392-1660 FAX: 718-729-5106
 WWW.WILLIAMSVALVE.COM

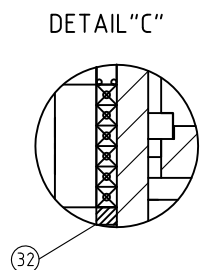
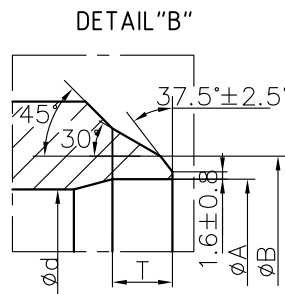
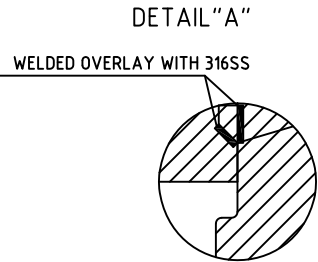
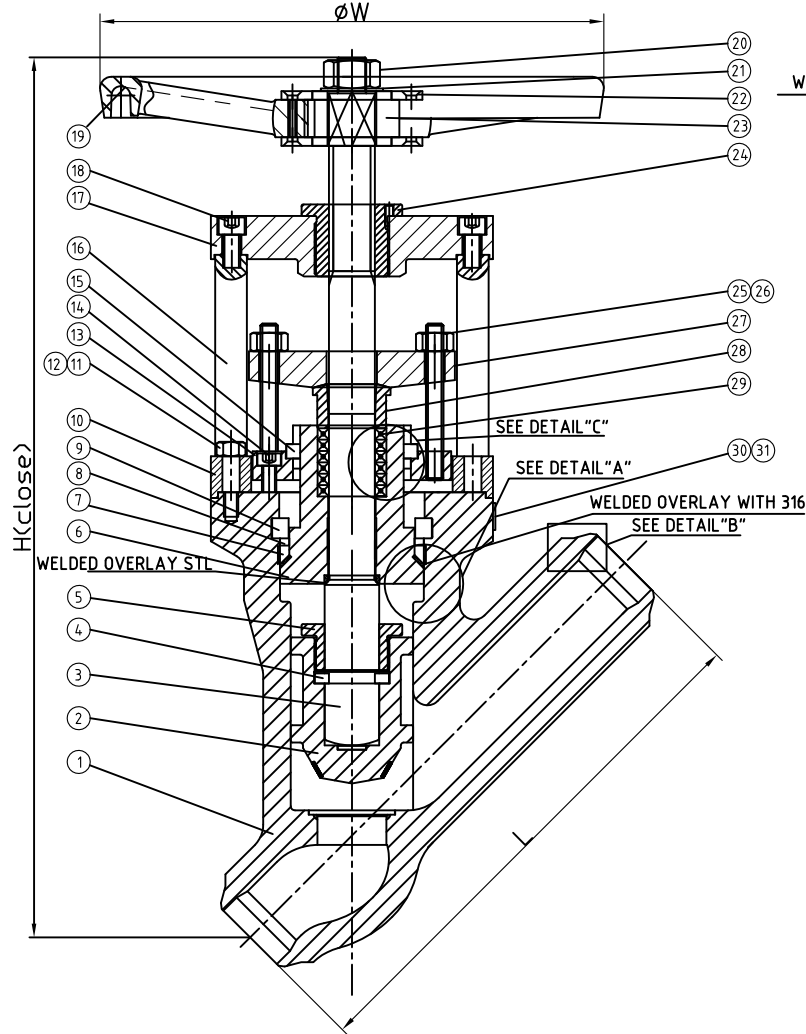
TITLE: CAST STEEL PRESSURE SEAL GLOBE VALVE
 CLASS 600 - API TRIM 5 - BUTTWELD - GEAR OPERATED - SCH.160

MARKING SYSTEM	MSS-SP-25	INSPECTION & TEST:	API 598	MATERIAL:	ASTM A216 GR.WCB	UNITS:	Inch, mm						
BUTTWELD ENDS	ANSI B16.25	SHELL	HYDRO	2250PSI	CLASS:	600	DATE:	12/06/16	SCALE:	N.T.S.			
FACE TO FACE	ANSI B16.10	SEAT	AIR	N/A	SIZE:	6" - 10"	FIG. No.: 602YW-3 PS GO						
WALL THICKNESS	API 600	SEAT	HYDRO	1630PSI	DRAWN BY:	F.J.							
NO.	DATE	DESCRIPTION	PRP'D	REV'D	APP'D	DESIGNED	API 600, ANSI B16.34	CHK'D & APR'D BY:	R.P.	REV:	1	DWG No.:	60GL120228-160-28

Wm. E. Williams No. 602YW3 PS Class 600 BW Pressure Y Pattern Globe Valve ASTM A216 WCB (API Trim 5)

NOTE:

- BILL OF MATERIAL AND DESIGN MAY DIFFER DEPENDING ON VALVE SIZE.
- SCHEDULE #160 SHOWN BELOW. SPECIFY PIPE SCHEDULE WHEN ORDERING.



ITEM	NAME	MATERIAL	SPECIFICATION
1	BODY	CAST STEEL	ASTM A216 WCB+STL
2	DISC	CARBON STEEL	ASTM A105N+STL
3	STEM	STAINLESS STEEL	ASTM A182 F6a
4	SPLIT COLLAR	CARBON STEEL	AISI A1045
5	DISC NUT	STAINLESS STEEL	ASTM A276 410
6	BONNET	CARBON STEEL	ASTM A105N+STL
7	GASKET		316+GRAPHITE
8	SPACER RING	CARBON STEEL	AISI A1045
9	SEPARATE RING	CARBON STEEL	AISI A1045
10	COVER	CARBON STEEL	AISI A1020
11	STUD	STEEL	ASTM A193 B7
12	NUT	STEEL	ASTM A194 2H
13	SUPPORT RING	CARBON STEEL	AISI A1020
14	SCREW	STEEL	ASTM A193 B7
15	SPLIT COLLAR	CARBON STEEL	AISI A1045
16	STAND COLUMN	CARBON STEEL	AISI A1020
17	SUPPORTING PLATE	CARBON STEEL	ASTM A105N
18	SCREW	STEEL	ASTM A193 B7
19	HANDWHEEL		ASTM A216 WCB
20	HANDWHEEL NUT	STEEL	AISI A1035
21	WASHER		ASTM A283 GRD
22	BAFFLE	CARBON STEEL	AISI A1035
23	IMPACT BLOCK	CARBON STEEL	AISI A1045
24	STEM NUT	BRASS	ASTM A439 D-2
25	STUD	STEEL	ASTM A193 B7
26	NUT	STEEL	ASTM A194 2H
27	GLAND FLANGE	CAST STEEL	ASTM A216 WCB
28	GLAND	STAINLESS STEEL	ASTM A276 410
29	PACKING		CHESTERTON PACKING
30	NAME PLATE	STAINLESS STEEL	ASTM A240 304
31	RIVET	STAINLESS STEEL	ASTM A240 304
32	PACKING CUSHION	STAINLESS STEEL	ASTM A276-410

SIZE	SCH	d	A	B	T	L	W	H
2"	160	51	42.8	60.3	13.5	292	250	397
2 1/2"	160	64	54	75	15.0	330	300	456
3"	160	76	66.5	91	17.0	356	350	492
4"	160	102	87	117	20.3	432	400	636

WILLIAM E. WILLIAMS VALVE CORPORATION
 38-52 REVIEW AVENUE LONG ISLAND CITY, NY 11101
 TEL: 718-992-1660 FAX: 718-729-5106

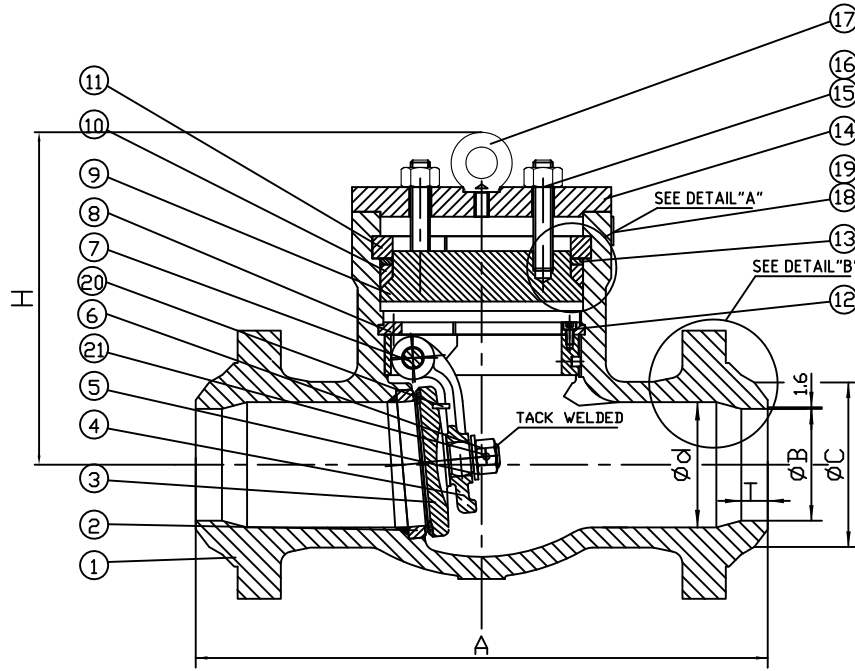
TITLE: CAST STEEL PRESSURE SEAL Y PATTERN GLOBE CLASS 600 - API TRIM 5 - BUTTWELD - SCHEDULE 160

					MARKING SYSTEM	MSS-SP-25	INSPECTION & TEST: API 598	MATERIAL: ASTM A216 GR.WCB	UNITS: Inch, mm
					BUTTWELD ENDS	ANSI B16.25	SHELL HYDRO 2250PSI	CLASS: 600 DATE: 12/02/16	SCALE: N.T.S.
					FACE TO FACE	ANSI B16.10	SEAT AIR N/A	SIZE: 2" - 4"	FIG. No.: 602YW-3 PS
					WALL THICKNESS	API 600	SEAT HYDRO 1630PSI	DRAWN BY: F.J.	
NO.	DATE	DESCRIPTION	PRP'D	REV'D	APP'D	DESIGNED	API 600, ANSI B16.34	CHK'D & APR'D BY: R.P.	REV: 1 DWG No.: 60YGL120190-160-28

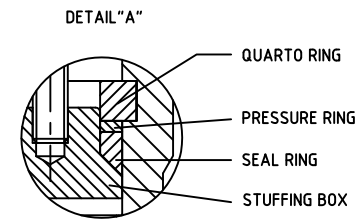
Wm. E. Williams No. 901W3 PS Class 900 BW Pressure Seal Swing Check Valve ASTM A216 WCB (API Trim 5)

NOTE:

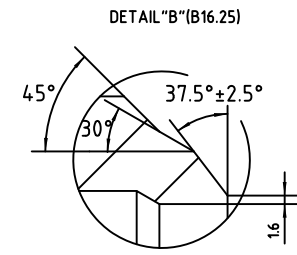
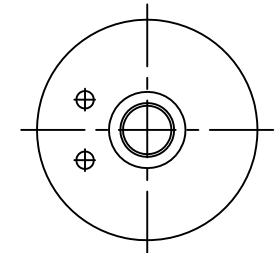
- BILL OF MATERIAL AND DESIGN MAY DIFFER DEPENDING ON VALVE SIZE.
- SCHEDULE #160 SHOWN. SPECIFY PIPE SCHEDULE WHEN ORDERING.



ITEM	NAME	MATERIAL	SPECIFICATION	NOTE
1	BODY	CAST STEEL	ASTM A216-WCB	
2	BODY RING	CARBON STEEL	ASTM A105+STL	
3	DSIC	CARBON STEEL	ASTM A105+STL	
4	HINGE	CAST STEEL	ASTM A216-WCB	
5	GASKET	STAINLESS STEEL	ASTM A276-410	
6	NUT	STAINLESS STEEL	ASTM A276-410	
7	PIN	STAINLESS STEEL	ASTM A276-410	
8	QUARTO RING OF FIXURE	CARBON STEEL	ASTM A105	
9	STUFFING BOX	CARBON STEEL	ASTM A105	
10	SEAL RING		304+GRAPHITE	
11	QUARTO RING	CARBON STEEL	ASTM A1045	
12	HEX BOLTS	STEEL	ASTM A193-B7	
13	PRESSURE RING	STAINLESS STEEL	ASTM A276-410	
14	CAP	CAST STEEL	ASTM A1045	
15	STUD	STEEL	ASTM A193-B7	
16	NUT	STEEL	ASTM A194-2H	
17	EYEBOLT	CARBON STEEL	ASTM A1035	
18	RIVET	STAINLESS STEEL	304SS	
19	NAME PLATE	STAINLESS STEEL	304SS	
20	PIN	CARBON STEEL	ASTM A29-1020	
21	PIN	STAINLESS STEEL	316SS	



Stop pin position in Disc



SIZE	SCH	d	A	B	C	T	H
4"	160	98	356	87	117	20.3	322
6"	160	146	508	132	172	28.0	372
8"	160	190	660	173	223	35.0	438
10"	160	238	787	216	278	43.0	506
12"	160	283	914	257	329	50.0	595

WILLIAM E. WILLIAMS
VALVE CORPORATION

38-52 REVIEW AVENUE
LONG ISLAND CITY, NY 11101

TEL: 718-392-1660
FAX: 718-729-5106

WWW.WILLIAMSVALVE.COM

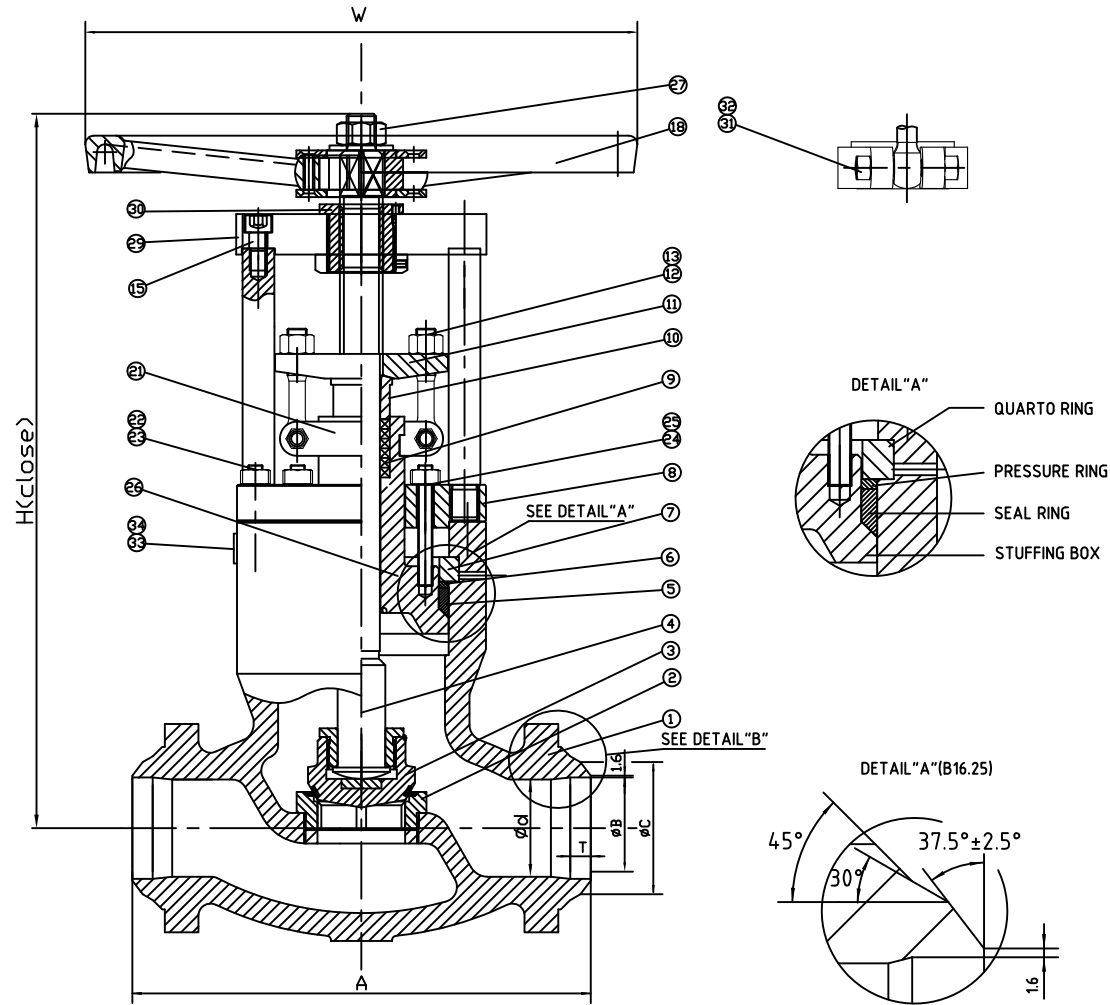
TITLE: CAST STEEL PRESSURE SEAL SWING CHECK VALVE
CLASS 900 - API TRIM 5 - BUTTWELD - SCHEDULE 160

						MARKING SYSTEM	MSS-SP-25	INSPECTION & TEST: API 598	MATERIAL: ASTM A216 GR.WCB	UNITS: Inch, mm
						BUTTWELD ENDS	ANSI B16.25	SHELL	HYDRO	3350PSI
						FACE TO FACE	ANSI B16.10	SEAT	AIR	80PSI
						WALL THICKNESS	API 594	BACK SEAT	HYDRO	2450PSI
NO.	DATE	DESCRIPTION	PRP'D	REV'D	APP'D	DESIGNED	API 594, ANSI B16.34			
									CLASS: 900	DATE: 10/06/15
									SCALE: N.T.S.	FIG. No.: 901W-3 PS
									DRAWN BY: F.J.	
									CHK'D & APR'D BY: R.P.	REV: 1
										DWG No.: 60SC120192-160-28

Wm. E. Williams No. 902W3 PS Class 900 BW Pressure Seal Globe Valve ASTM A216 WCB (API Trim 5)

NOTE:

- BILL OF MATERIAL AND DESIGN MAY DIFFER DEPENDING ON VALVE SIZE.
- SCHEDULE #160 SHOWN. SPECIFY PIPE SCHEDULE WHEN ORDERING.



ITEM	NAME	MATERIAL	SPECIFICATION	NOTE
1	BODY	CAST STEEL	ASTM A216-WCB	
2	BODY RING	CARBON STEEL	ASTM A105+STL	
3	DISC	CARBON STEEL	ASTM A105+STL	
4	STEM	STAINLESS STEEL	ASTM A182-F6a	
5	SEAL RING		304+GRAPHITE	
6	PRESSURE RING	STAINLESS STEEL	ASTM A276-410	
7	QUARTO RING	CAST STEEL	ASTM A1045	
8	SUPPORT PLATE	CAST STEEL	ASTM A1045	
9	PACKING RING	GRAPHITE		
10	GLAND	STAINLESS STEEL	ASTM A276-410	
11	GLAND FLANGE	CAST STEEL	ASTM A216-WCB	
12	EYE BOLT	STEEL	ASTM A193-B7	
13	EYE BOLT NUT	STEEL	ASTM A194-2H	
15	HEX BOLTS	STEEL	ASTM A193-B7	
16	PILLAR	CAST STEEL	ASTM A1045	
18	HANDWHEEL	NODULAR CAST IRON		
20	NUT	CAST STEEL	ASTM A1045	
21	SPLIT CLAMP RING	CAST STEEL	ASTM A216-WCB	
22	BONNET BOLT	STEEL	ASTM A193-B7	
23	BONNET NUT	STEEL	ASTM A194-2H	
24	BOLT	STEEL	ASTM A193-B7	
25	NUT	STEEL	ASTM A194-2H	
26	STUFFING BOX	CARBON STEEL	ASTM A105	
27	HANDWHEEL NUT	CARBON STEEL	ASTM A29-1035	
29	YOKE PLATE	CAST STEEL	ASTM A1045	
30	STEM NUT	NODULAR CAST IRON	ASTM A439 D-2	
31	NUT	STEEL	ASTM A194-2H	
32	STUD	STEEL	ASTM A194-B7	
33	RIVET	STAINLESS STEEL	304SS	
34	NAME PLATE	STAINLESS STEEL	304SS	

SIZE	SCH	d	A	W	B	C	T	H
2"	160	47.5	216	350	42.8	60.3	13.5	477
2 1/2"	160	57	254	350	54	75	15.0	532
3"	160	73	305	450	66.5	91	17.0	581
4"	160	98	354	500	87	117	20.3	708

WILLIAM E. WILLIAMS VALVE CORPORATION
 38-52 REVIEW AVENUE, LONG ISLAND CITY, NY 11101
 TEL: 718-992-1660 FAX: 718-729-5166

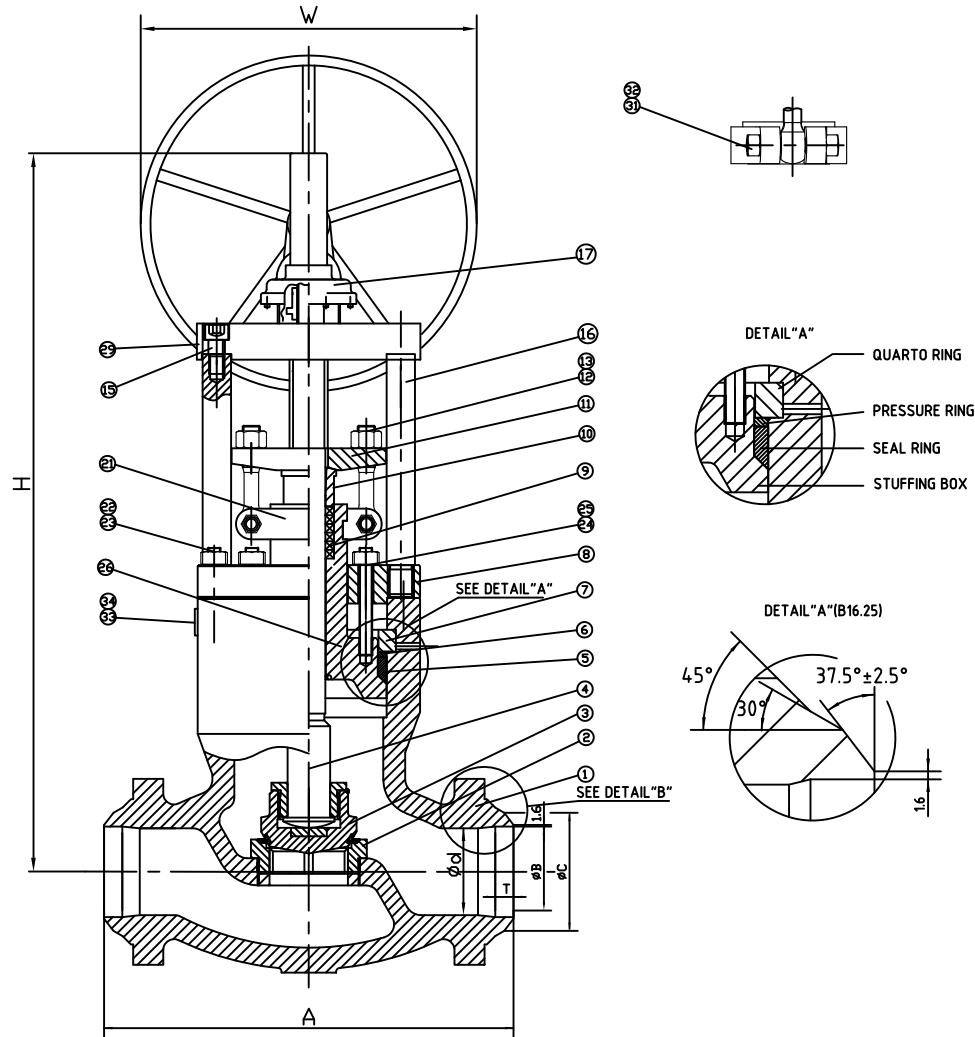
TITLE: CAST STEEL PRESSURE SEAL GLOBE VALVE
 CLASS 900 - API TRIM 5 - BUTTWELD - SCHEDULE 160

MARKING SYSTEM	MSS-SP-25	INSPECTION & TEST:	API 598	MATERIAL:	ASTM A216 GR.WCB	UNITS:	Inch, mm				
BUTTWELD ENDS	ANSI B16.25	SHELL	HYDRO	3350PSI	CLASS:	900	DATE:	10/06/15	SCALE:	N.T.S.	
FACE TO FACE	ANSI B16.10	SEAT	AIR	80PSI	SIZE:	2" - 4"	FIG. No.: 902W-3 PS				
WALL THICKNESS	API 600	BACK SEAT	HYDRO	2450PSI	DRAWN BY:	F.J.	CHK'D & APR'D BY: R.P. REV: 1 DWG No.: 60GL120188-160-28				
NO.	DATE	DESCRIPTION	PRP'D	REV'D	APP'D	DESIGNED	API 600, ANSI B16.34				

Wm. E. Williams No. 902W3 PS GO Class 900 BW Pressure Seal Globe Valve ASTM A216 WCB (API Trim 5)

NOTE:

- BILL OF MATERIAL AND DESIGN MAY DIFFER DEPENDING ON VALVE SIZE.
- SCHEDULE #160 SHOWN. SPECIFY PIPE SCHEDULE WHEN ORDERING.



ITEM	NAME	MATERIAL	SPECIFICATION	NOTE
1	BODY	CAST STEEL	ASTM A216-WCB	
2	BODY RING	CARBON STEEL	ASTM A105+STL	
3	DISC	CARBON STEEL	ASTM A105+STL	
4	STEM	STAINLESS STEEL	ASTM A182-F6a	
5	SEAL RING		304+GRAPHITE	
6	PRESSURE RING	STAINLESS STEEL	ASTM A276-410	
7	QUARTO RING	CAST STEEL	ASTM A1045	
8	SUPPORT PLATE	CAST STEEL	ASTM A1045	
9	PACKING RING	GRAPHITE		
10	GLAND	STAINLESS STEEL	ASTM A276-410	
11	GLAND FLANGE	CAST STEEL	ASTM A216-WCB	
12	EYE BOLT	STEEL	ASTM A193-B7	
13	EYE BOLT NUT	STEEL	ASTM A194-2H	
15	HEX BOLTS	STEEL	ASTM A193-B7	
16	PILLAR	CAST STEEL	ASTM A1045	
17	GEARBOX			
20	NUT	CAST STEEL	ASTM A1045	
21	SPLIT CLAMP RING	CAST STEEL	ASTM A216-WCB	
22	BONNET BOLT	STEEL	ASTM A193-B7	
23	BONNET NUT	STEEL	ASTM A194-2H	
24	BOLT	STEEL	ASTM A193-B7	
25	NUT	STEEL	ASTM A194-2H	
26	STUFFING BOX	CARBON STEEL	ASTM A105	
29	YOKE PLATE	CAST STEEL	ASTM A1045	
31	NUT	STEEL	ASTM A194-2H	
32	STUD	STEEL	ASTM A194-B7	
33	RIVET	STAINLESS STEEL	304SS	
34	NAME PLATE	STAINLESS STEEL	304SS	

SIZE	SCH	d	A	W	B	C	T	H
6"	160	146	508	610	132	172	28.0	1032
8"	160	190	660	610	173	223	35.0	1198
10"	160	238	787	610	216	278	43.0	1587

WILLIAM E. WILLIAMS VALVE CORPORATION
 38-52 REVIEW AVENUE LONG ISLAND CITY, NY 11101
 TEL: 718-392-1660 FAX: 718-729-5186

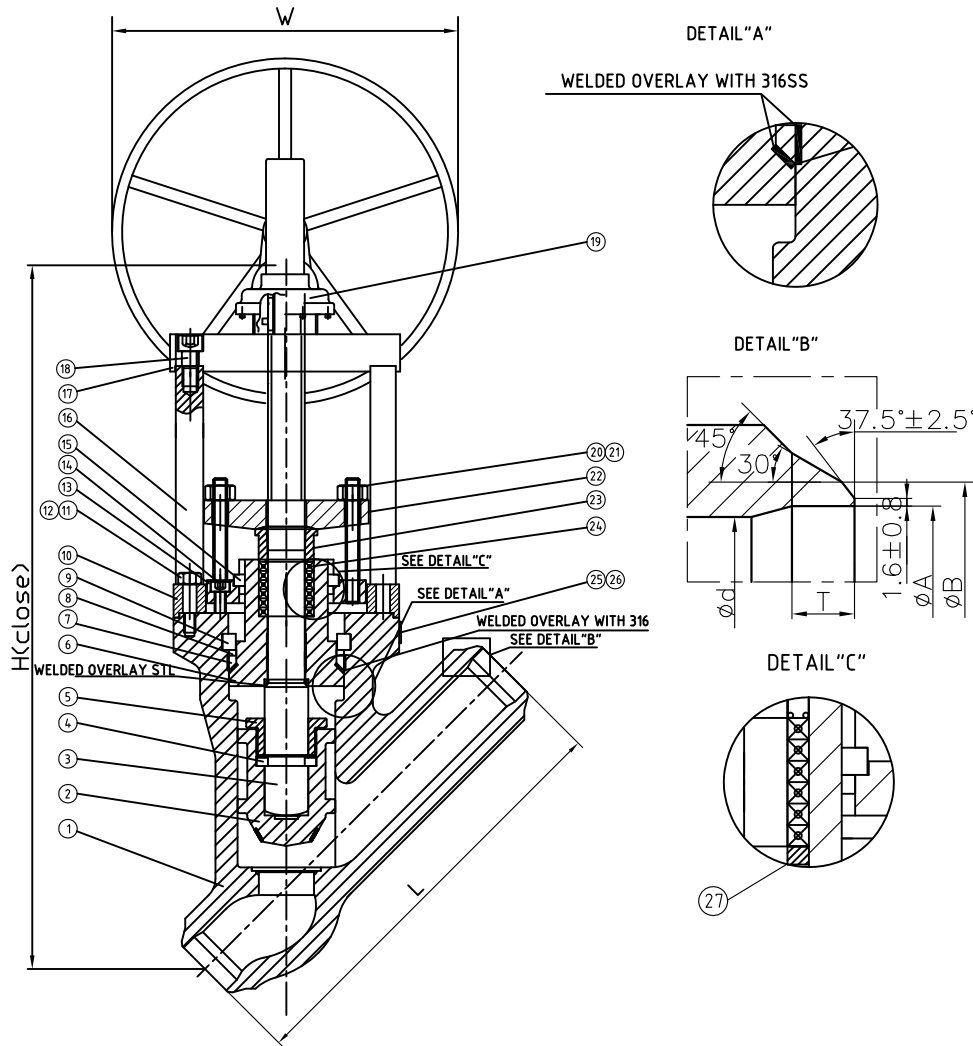
TITLE: CAST STEEL PRESSURE SEAL GLOBE VALVE
 CLASS 900 - API TRIM 5 - BUTTWELD - GEAR OPERATED - SCH.120

MARKING SYSTEM	MSS-SP-25	INSPECTION & TEST: API 598	MATERIAL: ASTM A216 GR.WCB	UNITS: Inch, mm
BUTTWELD ENDS	ANSI B16.25	SHELL HYDRO 3350PSI	CLASS: 900	DATE: 10/06/15
FACE TO FACE	ANSI B16.10	SEAT AIR 80PSI	SIZE: 6"-10"	SCALE: N.T.S.
WALL THICKNESS	API 600	BACK SEAT HYDRO 2450PSI	DRAWN BY: F.J.	FIG. No.: 902W-3 PS GO
NO.	DATE	DESCRIPTION	PRP'D	REV'D
DESIGNED	API 600, ANSI B16.34	CHK'D & APR'D BY: R.P.	REV: 1	DWG No.: 60GL120226-160-28

Wm. E. Williams No. 902YW3 PS GO Class 900 BW Pressure Y Pattern Globe Valve ASTM A216 WCB (API Trim 5)

NOTE:

- BILL OF MATERIAL AND DESIGN MAY DIFFER DEPENDING ON VALVE SIZE.
- SCHEDULE #160 SHOWN BELOW. SPECIFY PIPE SCHEDULE WHEN ORDERING.



ITEM	NAME	MATERIAL	SPECIFICATION
1	BODY	CAST STEEL	ASTM A216 WCB+STL
2	DISC	CARBON STEEL	ASTM A105N+STL
3	STEM	STAINLESS STEEL	ASTM A182 F6a
4	SPLIT COLLAR	CARBON STEEL	AISI A1045
5	DISC NUT	STAINLESS STEEL	ASTM A276 410
6	BONNET	CARBON STEEL	ASTM A105N+STL
7	GASKET		316+GRAPHITE
8	SPACER RING	CARBON STEEL	AISI A1045
9	SEPARATE RING	CARBON STEEL	AISI A1045
10	COVER	CARBON STEEL	AISI A1020
11	STUD	STEEL	ASTM A193 B7
12	NUT	STEEL	ASTM A194 2H
13	SUPPORT RING	CARBON STEEL	AISI A1020
14	SCREW	STEEL	ASTM A193 B7
15	SPLIT COLLAR	CARBON STEEL	AISI A1045
16	STAND COLUMN	CARBON STEEL	AISI A1020
17	SUPPORTING PLATE	CARBON STEEL	ASTM A105N
18	SCREW	STEEL	ASTM A193 B7
19	GEARBOX		
20	STUD	STEEL	ASTM A193 B7
21	NUT	STEEL	ASTM A194 2H
22	GLAND FLANGE	CAST STEEL	ASTM A216 WCB
23	GLAND	STAINLESS STEEL	ASTM A276 410
24	PACKING		CHESTERTON PACKING
25	NAME PLATE	STAINLESS STEEL	ASTM A240 304
26	RIVET	STAINLESS STEEL	ASTM A240 304
27	PACKING CUSHION	STAINLESS STEEL	ASTM A276-410

SIZE	SCH	d	L	W	A	B	T	H
6"	160	136	610	610	132	172	28.0	14.68
8"	160	178	737	610	173	223	35.0	1800
10"	160	222	838	710	216	278	43.0	2250

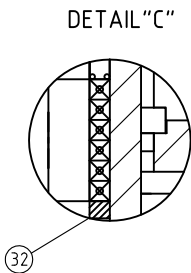
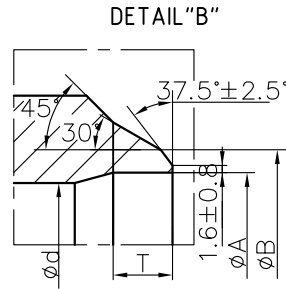
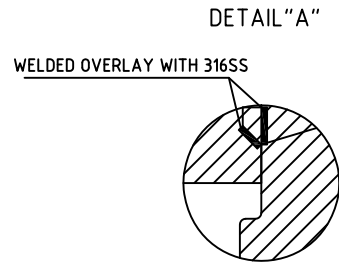
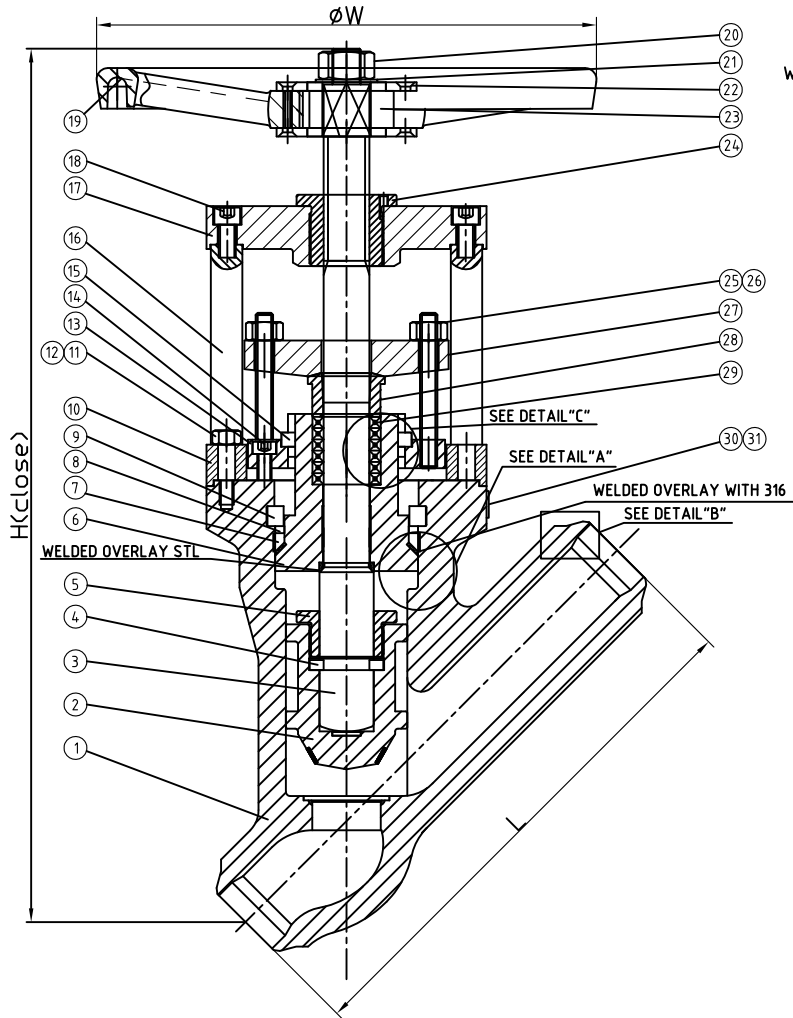
WILLIAM E. WILLIAMS VALVE CORPORATION
 38-52 REVIEW AVENUE LONG ISLAND CITY, NY 11101
 TEL: 718-393-1660 FAX: 718-729-5106

TITLE: CAST STEEL PRESSURE Y PATTERN GLOBE VALVE
 CLASS 900 - API TRIM 5 - BUTTWELD - GEAR OPERATED - SCH.160

NO.	DATE	DESCRIPTION	PRP'D	REV'D	APP'D	DESIGNED	API 600, ANSI B16.34	MARKING SYSTEM	MSS-SP-25	INSPECTION & TEST	API 598	MATERIAL:	ASTM A216 GR.WCB	UNITS:	Inch, mm	
								BUTTWELD ENDS	ANSI B16.25	SHELL	HYDRO	3350PSI	CLASS:	900	SCALE:	N.T.S.
								FACE TO FACE	ANSI B16.10	SEAT	AIR	N/A	SIZE:	6" - 10"	FIG. No.:	902YW-3 PS GO
								WALL THICKNESS	API 600	SEAT	HYDRO	2450PSI	DRAWN BY:	F.J.		
								CHK'D & APR'D BY:	R.P.	REV:	1					DWG No.:60YGL120158-160-28

Wm. E. Williams No. 902YW3 PS Class 900 BW Pressure Y Pattern Globe Valve ASTM A216 WCB (API Trim 5)

- NOTE:
- BILL OF MATERIAL AND DESIGN MAY DIFFER DEPENDING ON VALVE SIZE.
 - SCHEDULE #160 SHOWN BELOW. SPECIFY PIPE SCHEDULE WHEN ORDERING.



ITEM	NAME	MATERIAL	SPECIFICATION
1	BODY	CAST STEEL	ASTM A216 WCB+STL
2	DISC	CARBON STEEL	ASTM A105N+STL
3	STEM	STAINLESS STEEL	ASTM A182 F6a
4	SPLIT COLLAR	CARBON STEEL	AISI A1045
5	DISC NUT	STAINLESS STEEL	ASTM A276 410
6	BONNET	CARBON STEEL	ASTM A105N+STL
7	GASKET		316+GRAPHITE
8	SPACER RING	CARBON STEEL	AISI A1045
9	SEPARATE RING	CARBON STEEL	AISI A1045
10	COVER	CARBON STEEL	AISI A1020
11	STUD	STEEL	ASTM A193 B7
12	NUT	STEEL	ASTM A194 2H
13	SUPPORT RING	CARBON STEEL	AISI A1020
14	SCREW	STEEL	ASTM A193 B7
15	SPLIT COLLAR	CARBON STEEL	AISI A1045
16	STAND COLUMN	CARBON STEEL	AISI A1020
17	SUPPORTING PLATE	CARBON STEEL	ASTM A105N
18	SCREW	STEEL	ASTM A193 B7
19	HANDWHEEL		ASTM A216 WCB
20	HANDWHEEL NUT	STEEL	AISI A1035
21	WASHER		ASTM A283 GRD
22	BAFFLE	CARBON STEEL	AISI A1035
23	IMPACT BLOCK	CARBON STEEL	AISI A1045
24	STEM NUT	BRASS	ASTM A439 D-2
25	STUD	STEEL	ASTM A193 B7
26	NUT	STEEL	ASTM A194 2H
27	GLAND FLANGE	CAST STEEL	ASTM A216 WCB
28	GLAND	STAINLESS STEEL	ASTM A276 410
29	PACKING		CHESTERTON PACKING
30	NAME PLATE	STAINLESS STEEL	ASTM A240 304
31	RIVET	STAINLESS STEEL	ASTM A240 304
32	PACKING CUSHION	STAINLESS STEEL	ASTM A276-410

SIZE	SCH	d	A	B	T	L	W	H
2"	160	47.5	42.8	60.3	13.5	368	350	397
2 1/2"	160	57	54	75	15.0	419	400	456
3"	160	73	66.5	91	17.0	381	450	700
4"	160	98	87	117	20.3	457	500	900

WILLIAM E. WILLIAMS VALVE CORPORATION
 38-52 REVIEW AVENUE LONG ISLAND CITY, NY 11101
 TEL: 718-392-1660 FAX: 718-729-5106

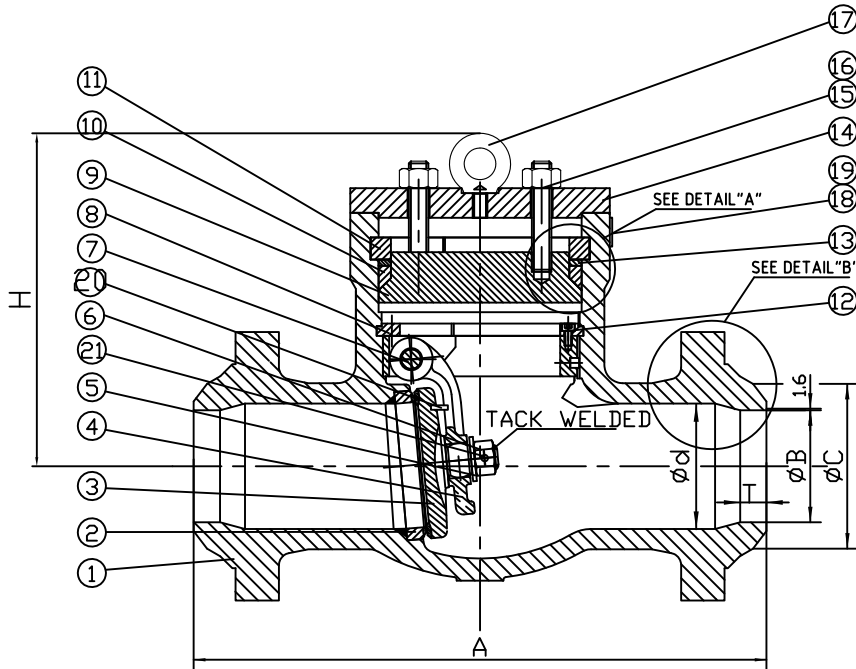
TITLE: CAST STEEL PRESSURE Y PATTERN GLOBE VALVE
 CLASS 900 - API TRIM 5 - BUTTWELD - SCHEDULE 160

MARKING SYSTEM	MSS-SP-25	INSPECTION & TEST: API 598	MATERIAL: ASTM A216 GR.WCB	UNITS: Inch, mm
BUTTWELD ENDS	ANSI B16.25	SHELL HYDRO 3350PSI	CLASS: 900	DATE: 12/07/16
FACE TO FACE	ANSI B16.10	SEAT AIR N/A	SIZE: 2" - 4"	SCALE: N.T.S.
WALL THICKNESS	API 600	SEAT HYDRO 2450PSI	DRAWN BY: F.J.	FIG. No.: 902YW-3 PS
NO.	DATE	DESCRIPTION	PRP'D	REV'D
DESIGNED	API 600, ANSI B16.34		CHK'D & APR'D BY: R.P.	REV: 1
				DWG No.: 60YGL120178-160-28

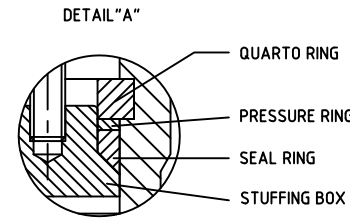
Wm. E. Williams No. 1501W3 PS Class 1500 BW Pressure Seal Swing Check Valve ASTM A216 WCB (API Trim 5)

NOTE:

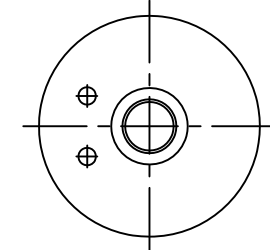
- BILL OF MATERIAL AND DESIGN MAY DIFFER DEPENDING ON VALVE SIZE.
- SCHEDULE #160 SHOWN. SPECIFY PIPE SCHEDULE WHEN ORDERING.



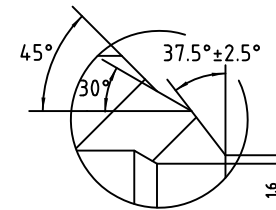
ITEM	NAME	MATERIAL	SPECIFICATION	NOTE
1	BODY	CAST STEEL	ASTM A216-WCB	
2	BODY RING	CARBON STEEL	ASTM A105+STL	
3	DSIC	CARBON STEEL	ASTM A105+STL	
4	HINGE	CAST STEEL	ASTM A216-WCB	
5	GASKET	STAINLESS STEEL	ASTM A276-410	
6	NUT	STAINLESS STEEL	ASTM A276-410	
7	PIN	STAINLESS STEEL	ASTM A276-410	
8	QUARTO RING OF FIXURE	CARBON STEEL	ASTM A105	
9	STUFFING BOX	CARBON STEEL	ASTM A105	
10	SEAL RING		304+GRAPHITE	
11	QUARTO RING	CARBON STEEL	ASTM A1045	
12	HEX BOLTS	STEEL	ASTM A193-B7	
13	PRESSURE RING	STAINLESS STEEL	ASTM A276-410	
14	CAP	CAST STEEL	ASTM A1045	
15	STUD	STEEL	ASTM A193-B7	
16	NUT	STEEL	ASTM A194-2H	
17	EYEBOLT	CARBON STEEL	ASTM A1035	
18	RIVET	STAINLESS STEEL	304SS	
19	NAME PLATE	STAINLESS STEEL	304SS	
20	PIN	CARBON STEEL	ASTM A29-1020	
21	PIN	STAINLESS STEEL	316SS	



Stop pin position in Disc



DETAIL "B" (B16.25)



SIZE	SCH	d	A	B	C	T	H
4"	160	92	406	87	117	20.3	318
6"	160	136	559	132	172	28.0	422
8"	160	178	711	173	223	35.0	475
10"	160	222	864	216	278	43.0	542
12"	160	263	991	257	329	50.0	561

WILLIAM E. VALVE CORPORATION
 38-52 REVIEW AVENUE, LONG ISLAND CITY, NY 11101
 TEL: 718-392-1660, FAX: 718-729-5166

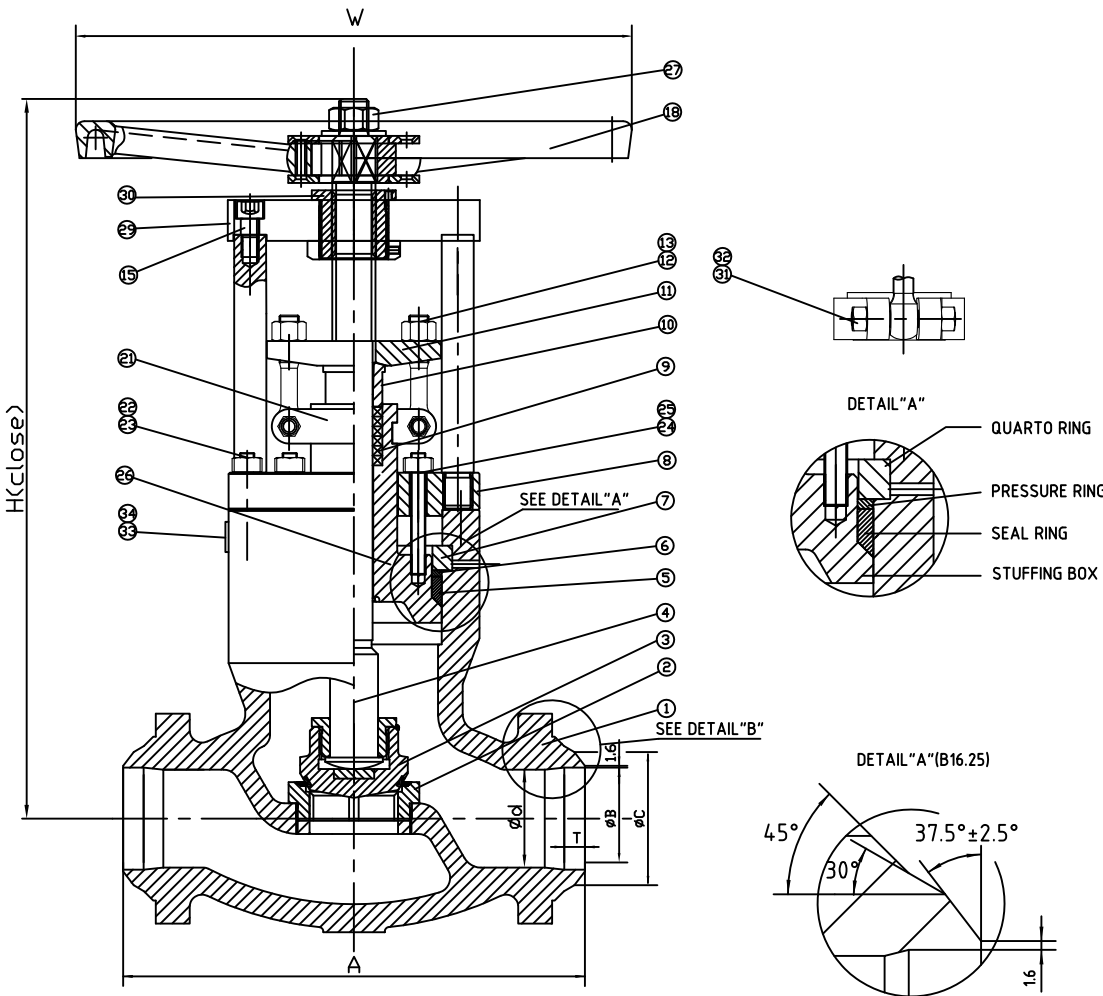
TITLE: CAST STEEL PRESSURE SEAL SWING CHECK VALVE
 CLASS 1500 - API TRIM 5 - BUTTWELD - SCHEDULE 160

MARKING SYSTEM		MSS-SP-25	INSPECTION & TEST: API 598		MATERIAL: ASTM A216 GR.WCB	UNITS: Inch, mm	
BUTTWELD ENDS		ANSI B16.25	SHELL	HYDRO	5598PSI	CLASS: 1500 DATE: 10/06/15	
FACE TO FACE		ANSI B16.10	SEAT	AIR	80PSI	SCALE: N.T.S.	
WALL THICKNESS		API 594	BACK SEAT	HYDRO	4100PSI	FIG. No.: 1501W-3 PS	
NO.	DATE	DESCRIPTION	PRP'D	REV'D	APP'D	DESIGNED	API 594, ANSI B16.34
CHK'D & APR'D BY: R.P.		REV: 1	DWG No.: 60SC120193-160-28				

Wm. E. Williams No. 1502W3 PS Class 1500 BW Pressure Seal Globe Valve ASTM A216 WCB (API Trim 5)

NOTE:

1. BILL OF MATERIAL AND DESIGN MAY DIFFER DEPENDING ON VALVE SIZE.
2. SCHEDULE #160 SHOWN. SPECIFY PIPE SCHEDULE WHEN ORDERING.



ITEM	NAME	MATERIAL	SPECIFICATION	NOTE
1	BODY	CAST STEEL	ASTM A216-WCB	
2	BODY RING	CARBON STEEL	ASTM A105-STL	
3	DISC	CARBON STEEL	ASTM A105-STL	
4	STEM	STAINLESS STEEL	ASTM A182-F6a	
5	SEAL RING		304+GRAPHITE	
6	PRESSURE RING	STAINLESS STEEL	ASTM A276-410	
7	QUARTO RING	CAST STEEL	ASTM A1045	
8	SUPPORT PLATE	CAST STEEL	ASTM A1045	
9	PACKING RING	GRAPHITE		
10	GLAND	STAINLESS STEEL	ASTM A276-410	
11	GLAND FLANGE	CAST STEEL	ASTM A216-WCB	
12	EYE BOLT	STEEL	ASTM A193-B7	
13	EYE BOLT NUT	STEEL	ASTM A194-2H	
15	HEX BOLTS	STEEL	ASTM A193-B7	
16	PILLAR	CAST STEEL	ASTM A1045	
18	HANDWHEEL	MODULAR CAST IRON		
20	NUT	CAST STEEL	ASTM A1045	
21	SPLIT CLAMP RING	CAST STEEL	ASTM A216-WCB	
22	BONNET BOLT	STEEL	ASTM A193-B7	
23	BONNET NUT	STEEL	ASTM A194-2H	
24	BOLT	STEEL	ASTM A193-B7	
25	NUT	STEEL	ASTM A194-2H	
26	STUFFING BOX	CARBON STEEL	ASTM A105	
27	HANDWHEEL NUT	CARBON STEEL	ASTM A29-1035	
29	YOKE PLATE	CAST STEEL	ASTM A1045	
30	STEM NUT	MODULAR CAST IRON	ASTM A439 D-2	
31	NUT	STEEL	ASTM A194-2H	
32	STUD	STEEL	ASTM A194-B7	
33	RIVET	STAINLESS STEEL	304SS	
34	NAME PLATE	STAINLESS STEEL	304SS	

SIZE	SCH	d	A	W	B	C	T	H
2"	160	47.5	216	350	42.8	60.3	13.5	477
2 1/2"	160	57	254	350	54	75	15.0	569
3"	160	70	305	500	66.5	91	17.0	612
4"	160	92	406	560	87	117	20.3	783

					MARKING SYSTEM	MSS-SP-25	INSPECTION & TEST: API 598	MATERIAL: ASTM A216 GR.WCB	UNITS: Inch, mm					
					BUTTWELD ENDS	ANSI B16.25	SHELL HYDRO 5598PSI	CLASS: 1500	DATE: 10/06/15	SCALE: N.T.S.				
					FACE TO FACE	ANSI B16.10	SEAT AIR 80PSI	SIZE: 2" - 4"		FIG. No.: 1502W-3 PS				
					WALL THICKNESS	API 600	BACK SEAT HYDRO 4100PSI	DRAWN BY: F.J.						
					NO. DATE	DESCRIPTION	PRP'D	REV'D	APP'D	DESIGNED	API 600, ANSI B16.34	CHK'D & APR'D BY: R.P.	REV: 1	DWG No.: 60GL120189-160-28

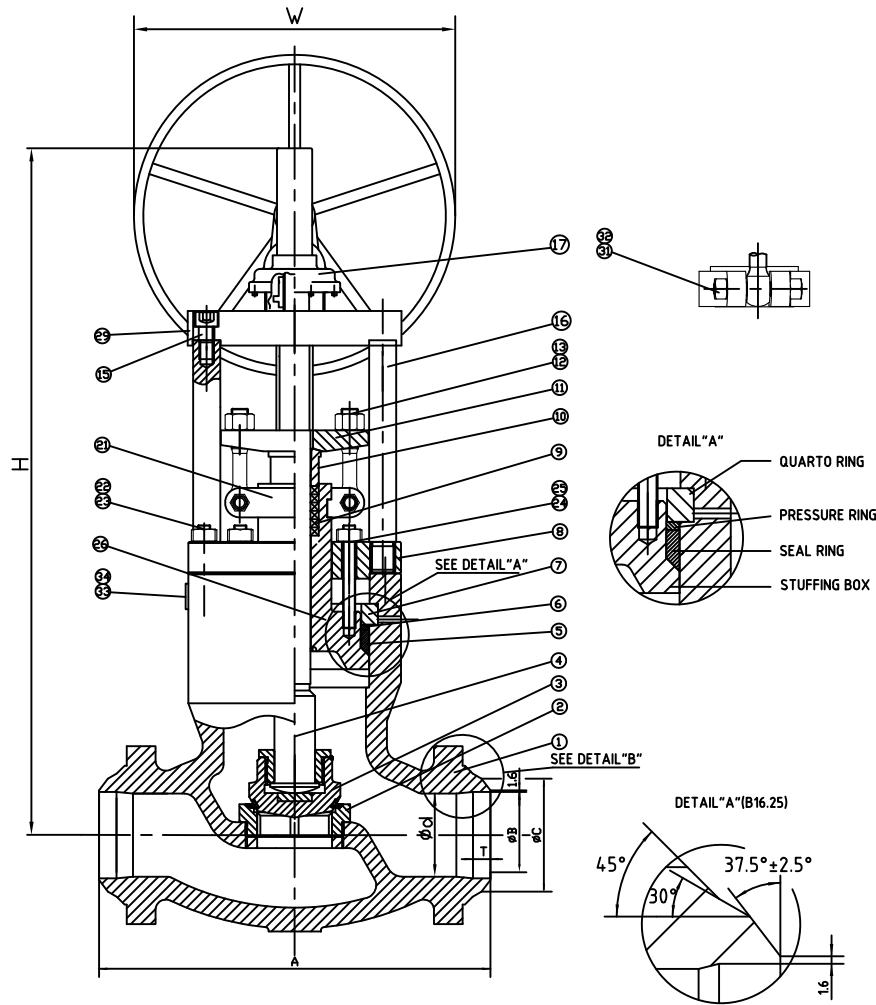
WILLIAM E. WILLIAMS VALVE CORPORATION
 38-52 REVIEW AVENUE LONG ISLAND CITY, NY 11101
 TEL: 718-392-1660 FAX: 718-729-5106

TITLE: CAST STEEL PRESSURE SEAL GLOBE VALVE
 CLASS 1500 - API TRIM 5 - BUTTWELD - SCHEDULE 160

Wm. E. Williams No. 1502W3 PS GO Class 1500 BW Pressure Seal Globe Valve ASTM A216 WCB (API Trim 5)

NOTE:

- BILL OF MATERIAL AND DESIGN MAY DIFFER DEPENDING ON VALVE SIZE.
- SCHEDULE #160 SHOWN. SPECIFY PIPE SCHEDULE WHEN ORDERING.



ITEM	NAME	MATERIAL	SPECIFICATION	NOTE
1	BODY	CAST STEEL	ASTM A216-WCB	
2	BODY RING	CARBON STEEL	ASTM A105+STL	
3	DISC	CARBON STEEL	ASTM A105+STL	
4	STEM	STAINLESS STEEL	ASTM A182-F6a	
5	SEAL RING		304+GRAPHITE	
6	PRESSURE RING	STAINLESS STEEL	ASTM A276-410	
7	QUARTO RING	CAST STEEL	ASTM A1045	
8	SUPPORT PLATE	CAST STEEL	ASTM A1045	
9	PACKING RING	GRAPHITE		
10	GLAND	STAINLESS STEEL	ASTM A276-410	
11	GLAND FLANGE	CAST STEEL	ASTM A216-WCB	
12	EYE BOLT	STEEL	ASTM A193-B7	
13	EYE BOLT NUT	STEEL	ASTM A194-2H	
15	HEX BOLTS	STEEL	ASTM A193-B7	
16	PILLAR	CAST STEEL	ASTM A1045	
17	GEARBOX			
20	NUT	CAST STEEL	ASTM A1045	
21	SPLIT CLAMP RING	CAST STEEL	ASTM A216-WCB	
22	BONNET BOLT	STEEL	ASTM A193-B7	
23	BONNET NUT	STEEL	ASTM A194-2H	
24	BOLT	STEEL	ASTM A193-B7	
25	NUT	STEEL	ASTM A194-2H	
26	STUFFING BOX	CARBON STEEL	ASTM A105	
29	YOKE PLATE	CAST STEEL	ASTM A1045	
31	NUT	STEEL	ASTM A194-2H	
32	STUD	STEEL	ASTM A194-B7	
33	RIVET	STAINLESS STEEL	304SS	
34	NAME PLATE	STAINLESS STEEL	304SS	

SIZE	SCH	d	A	W	B	C	T	H
6"	160	136	559	610	132	172	28.0	1468
8"	160	178	711	610	173	223	35.0	1800
10"	160	222	864	710	216	278	43.0	2250

WILLIAM E. WILLIAMS VALVE CORPORATION
 38-52 REVIEW AVENUE LONG ISLAND CITY, NY 11101
 TEL: 718-392-1660 FAX: 718-729-5106
 WWW.WILLIAMSVALVE.COM

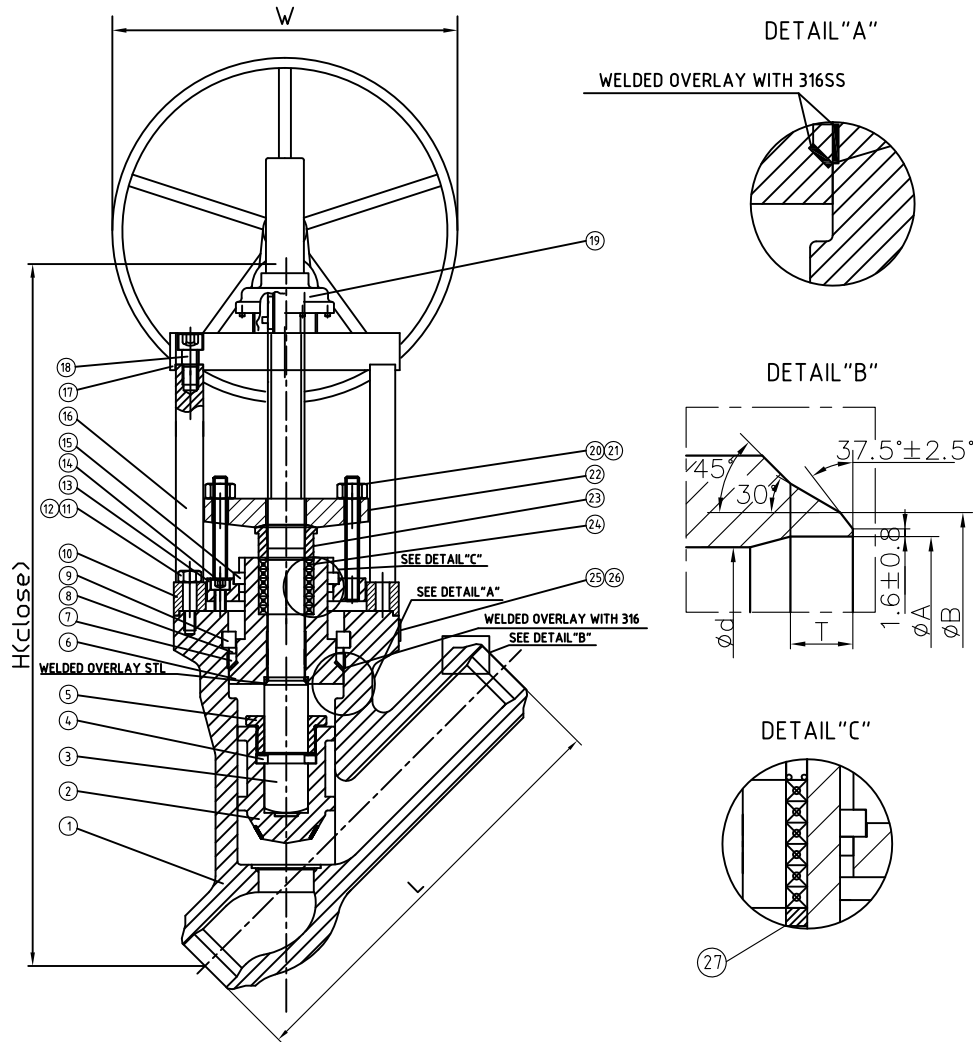
TITLE: CAST STEEL PRESSURE SEAL GLOBE VALVE
 CLASS 1500 - API TRIM 5 - BUTTWELD - GEAR OPERATED - SCH.160

MARKING SYSTEM	MSS-SP-25	INSPECTION & TEST: API 598	MATERIAL: ASTM A216 GR.WCB	UNITS: Inch, mm
BUTTWELD ENDS	ANSI B16.25	SHELL HYDRO 5598PSI	CLASS: 1500	DATE: 10/06/15
FACE TO FACE	ANSI B16.10	SEAT AIR 80PSI	SIZE: 6" - 10"	SCALE: N.T.S.
WALL THICKNESS	API 600	BACK SEAT HYDRO 4100PSI	DRAWN BY: F.J.	FIG. No.: 1502W-3 PS GO
NO.	DATE	DESCRIPTION	PRP'D	REV'D
DESIGNED	API 600, ANSI B16.34	CHK'D & APP'D BY: R.P.	REV: 1	DWG No.: 60GL120227-160-28

Wm. E. Williams No. 1502YW3 PS GO Class 1500 BW Pressure Y Pattern Globe Valve ASTM A216 WCB (API Trim 5)

NOTE:

1. BILL OF MATERIAL AND DESIGN MAY DIFFER DEPENDING ON VALVE SIZE.
2. SCHEDULE #160 SHOWN BELOW. SPECIFY PIPE SCHEDULE WHEN ORDERING.



ITEM	NAME	MATERIAL	SPECIFICATION
1	BODY	CAST STEEL	ASTM A216 WCB+STL
2	DISC	CARBON STEEL	ASTM A105N+STL
3	STEM	STAINLESS STEEL	ASTM A182 F6a
4	SPLIT COLLAR	CARBON STEEL	AISI A1045
5	DISC NUT	STAINLESS STEEL	ASTM A276 410
6	BONNET	CARBON STEEL	ASTM A105N+STL
7	GASKET		316+GRAPHITE
8	SPACER RING	CARBON STEEL	AISI A1045
9	SEPARATE RING	CARBON STEEL	AISI A1045
10	COVER	CARBON STEEL	AISI A1020
11	STUD	STEEL	ASTM A193 B7
12	NUT	STEEL	ASTM A194 2H
13	SUPPORT RING	CARBON STEEL	AISI A1020
14	SCREW	STEEL	ASTM A193 B7
15	SPLIT COLLAR	CARBON STEEL	AISI A1045
16	STAND COLUMN	CARBON STEEL	AISI A1020
17	SUPPORTING PLATE	CARBON STEEL	ASTM A105N
18	SCREW	STEEL	ASTM A193 B7
19	GEARBOX		
20	STUD	STEEL	ASTM A193 B7
21	NUT	STEEL	ASTM A194 2H
22	GLAND FLANGE	CAST STEEL	ASTM A216 WCB
23	GLAND	STAINLESS STEEL	ASTM A276 410
24	PACKING		CHESTERTON PACKING
25	NAME PLATE	STAINLESS STEEL	ASTM A240 304
26	RIVET	STAINLESS STEEL	ASTM A240 304
27	PACKING CUSHION	STAINLESS STEEL	ASTM A276-410

SIZE	SCH	d	L	W	A	B	T	H
6"	160	136	705	710	132	172	28.0	1468
8"	160	178	832	800	173	223	35.0	1800
10"	160	222	991	800	216	278	43.0	2250

WILLIAM E. WILLIAMS VALVE CORPORATION
 38-52 REVIEW AVENUE, LONG ISLAND CITY, NY 11101
 TEL: 718-392-1650, FAX: 718-726-5106

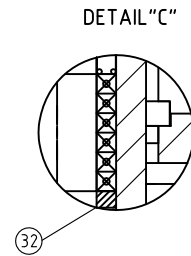
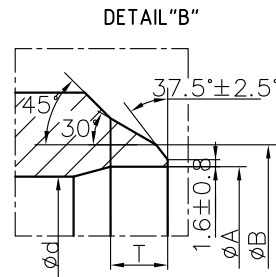
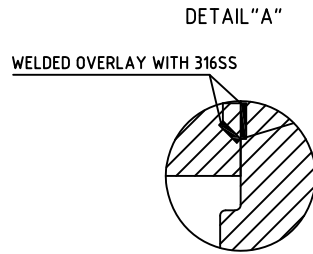
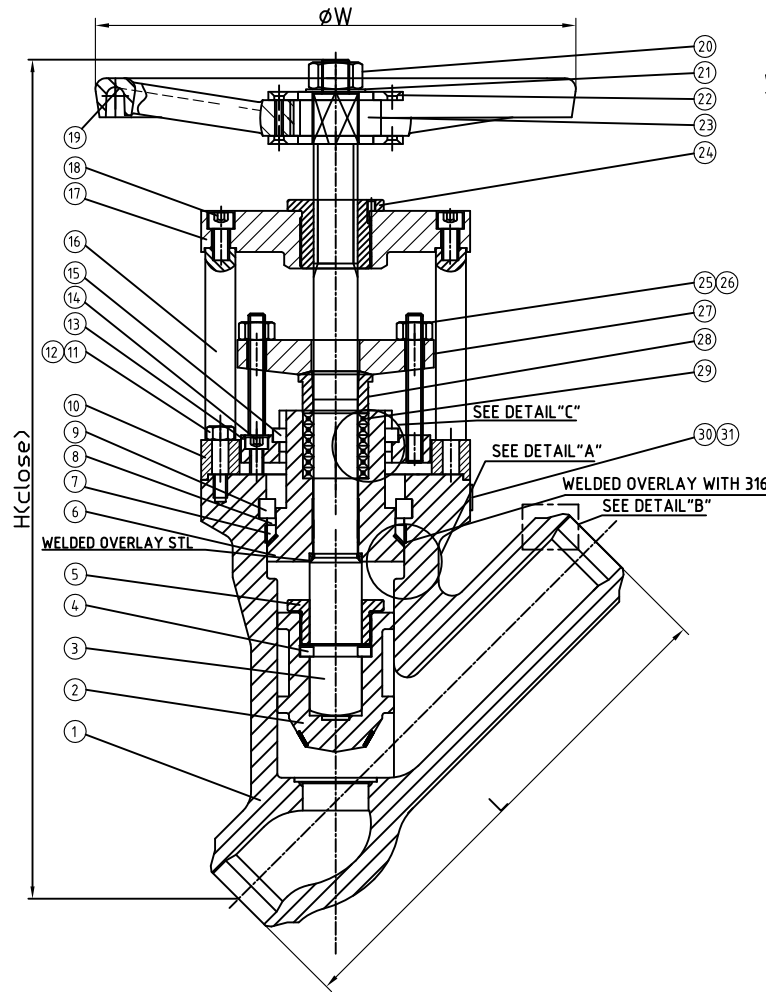
TITLE: CAST STEEL PRESSURE SEAL Y PATTERN GLOBE VALVE
 BUTTWELD - API TRIM 5 - GEAR OPERATED - GEAR OPERATED - SCH.160

MARKING SYSTEM	MSS-SP-25	INSPECTION & TEST:	API 598	MATERIAL:	ASTM A216 GR.WCB	UNITS:	Inch, mm
BUTTWELD ENDS	ANSI B16.25	SHELL	HYDRO 5598PSI	CLASS:	1500	DATE:	12/09/16
FACE TO FACE	ANSI B16.10	SEAT	AIR N/A	SIZE:	6" - 10"	SCALE:	N.T.S.
WALL THICKNESS	API 600	SEAT	HYDRO 4100PSI	DRAWN BY:	F.J.	FIG. No.:	1502YW-3 PS GO
NO.	DATE	DESCRIPTION	PRP'D	REV'D	APP'D	DESIGNED	API 600, ANSI B16.34
CHK'D & APR'D BY:	R.P.	REV:	1	DWG No.:	60YGL120206-160-28		

Wm. E. Williams No.1502YW3 PS Class 1500 BW Pressure Y Pattern Globe Valve ASTM A216 WCB (API TRIM 5)

NOTE:

- BILL OF MATERIAL AND DESIGN MAY DIFFER DEPENDING ON VALVE SIZE.
- SCHEDULE #160 SHOWN BELOW. SPECIFY PIPE SCHEDULE WHEN ORDERING.



ITEM	NAME	MATERIAL	SPECIFICATION
1	BODY	CAST STEEL	ASTM A216 WCB+STL
2	DISC	CARBON STEEL	ASTM A105N+STL
3	STEM	STAINLESS STEEL	ASTM A182 F6a
4	SPLIT COLLAR	CARBON STEEL	AISI A1045
5	DISC NUT	STAINLESS STEEL	ASTM A276 410
6	BONNET	CARBON STEEL	ASTM A105N+STL
7	GASKET		316+GRAPHITE
8	SPACER RING	CARBON STEEL	AISI A1045
9	SEPARATE RING	CARBON STEEL	AISI A1045
10	COVER	CARBON STEEL	AISI A1020
11	STUD	STEEL	ASTM A193 B7
12	NUT	STEEL	ASTM A194 2H
13	SUPPORT RING	CARBON STEEL	AISI A1020
14	SCREW	STEEL	ASTM A193 B7
15	SPLIT COLLAR	CARBON STEEL	AISI A1045
16	STAND COLUMN	CARBON STEEL	AISI A1020
17	SUPPORTING PLATE	CARBON STEEL	ASTM A105N
18	SCREW	STEEL	ASTM A193 B7
19	HANDWHEEL		ASTM A216 WCB
20	HANDWHEEL NUT	STEEL	AISI A1035
21	WASHER		ASTM A283 GRD
22	BAFFLE	CARBON STEEL	AISI A1035
23	IMPACT BLOCK	CARBON STEEL	AISI A1045
24	STEM NUT	BRASS	ASTM A439 D-2
25	STUD	STEEL	ASTM A193 B7
26	NUT	STEEL	ASTM A194 2H
27	GLAND FLANGE	CAST STEEL	ASTM A216 WCB
28	GLAND	STAINLESS STEEL	ASTM A276 410
29	PACKING		CHESTERTON PACKING
30	NAME PLATE	STAINLESS STEEL	ASTM A240 304
31	RIVET	STAINLESS STEEL	ASTM A240 304
32	PACKING CUSHION	STAINLESS STEEL	ASTM A276-410

SIZE	SCH	d	A	B	T	L	W	H
2"	160	48	42.8	60.3	13.5	368	350	397
2 1/2"	160	57	54	75	15.0	419	400	456
3"	160	70	66.5	91	17.0	470	450	492
4"	160	92	87	117	20.3	546	560	636

WILLIAM E. WILLIAMS VALVE CORPORATION

38-52 REVIEW AVENUE LONG ISLAND CITY, NY 11101

TEL: 718-992-1660 FAX: 718-729-5106

WWW.WILLIAMSVALVE.COM

TITLE: CAST STEEL PRESSURE SEAL Y PATTERN GLOBE CLASS 1500 - API TRIM 5 - BUTTWELD - SCHEDULE 160

						MATERIAL: ASTM A216 GR WCB	UNITS: Inch, mm
						CLASS: 1500	DATE: 12/08/16
						SIZE: 2" - 4"	SCALE: N.T.S.
						DRAWN BY: F.J.	FIG. No.: 1502YW3 PS
						CHK'D & APR'D BY: R.P.	REV: 1
							DWG No.: 60YGL120159-160-28

NO.	DATE	DESCRIPTION	PRP'D	REV'D	APP'D	DESIGNED	API 600, ANSI B16.34
12/8/16	RELEASED	F.J.	R.P.	R.P.			

MARKING SYSTEM	MSS-SP-25	INSPECTION & TEST: API 598
DIM. OF FLANGE	ANSI B16.25	SHELL HYDRO 5598PSI
FACE TO FACE	ANSI B16.10	SEAT HYDRO 4100PSI
WALL THICKNESS	API 600	SEAT AIR N/A